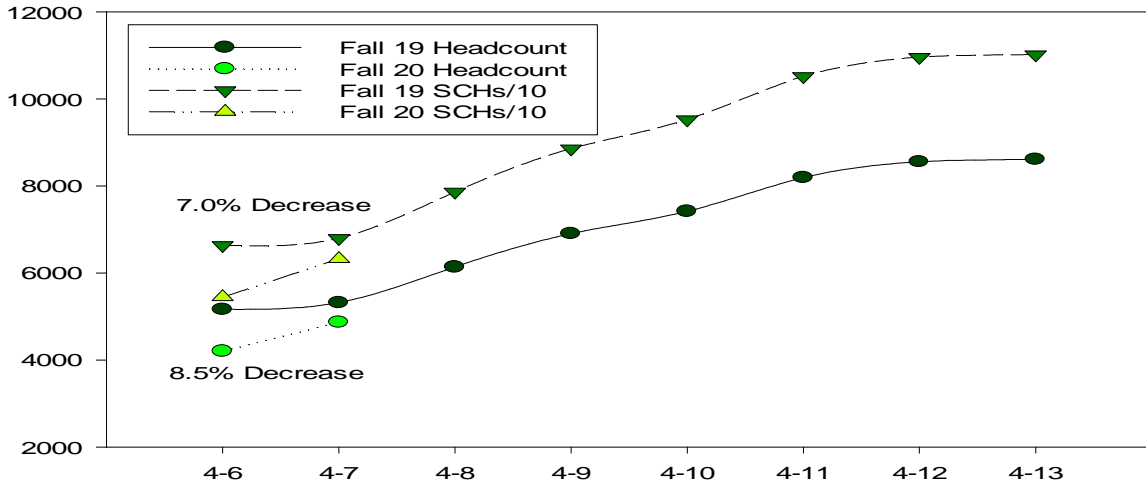


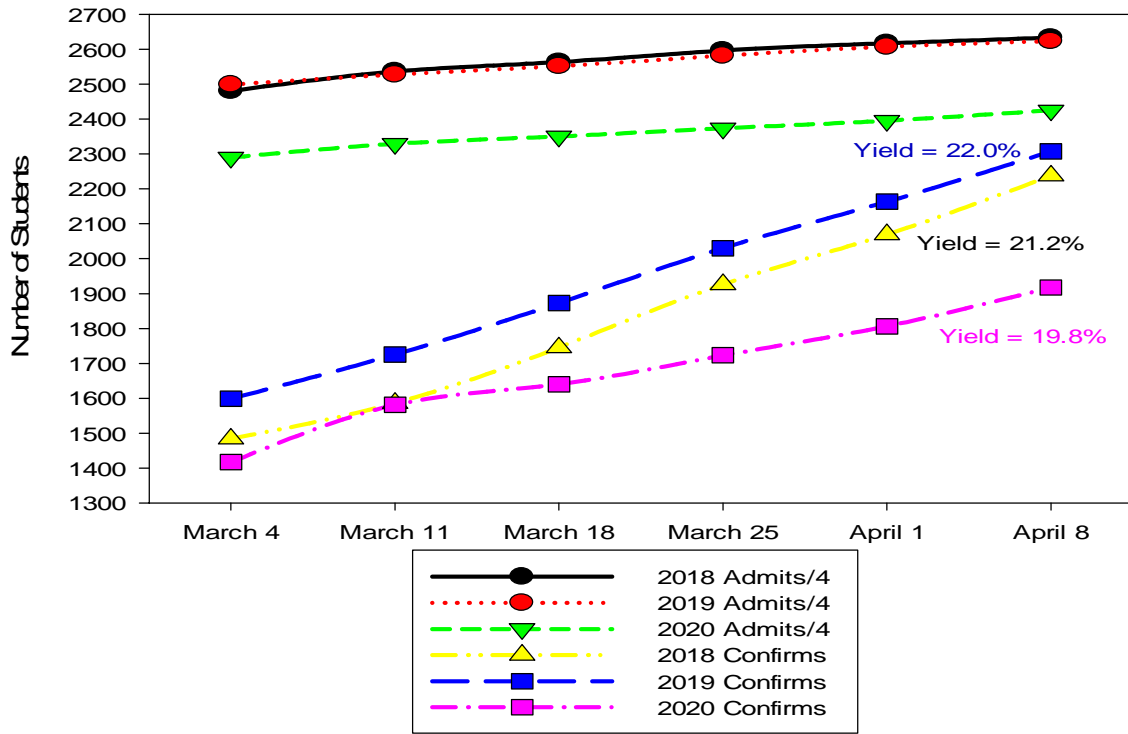
Enrollment Update as of April 7, 2020

Summer Course Registrations	2019 Headcounts	2020 Headcounts	Headcount Difference	% Difference
	3,958	3,197	-761	-19.2%
Fall Course Registrations	2019 Headcounts	2020 Headcounts	Headcount Difference	% Difference
	5,320	4,869	-451	-8.5%
New Freshmen Admits	2019 Headcounts	2020 Headcounts	Headcount Difference	% Difference
	10,492	9,700	-792	-7.5%
New Freshmen Confirmations	2019 Headcounts	2020 Headcounts	Headcount Difference	% Difference
	2,307	1,917	-390	-16.9%

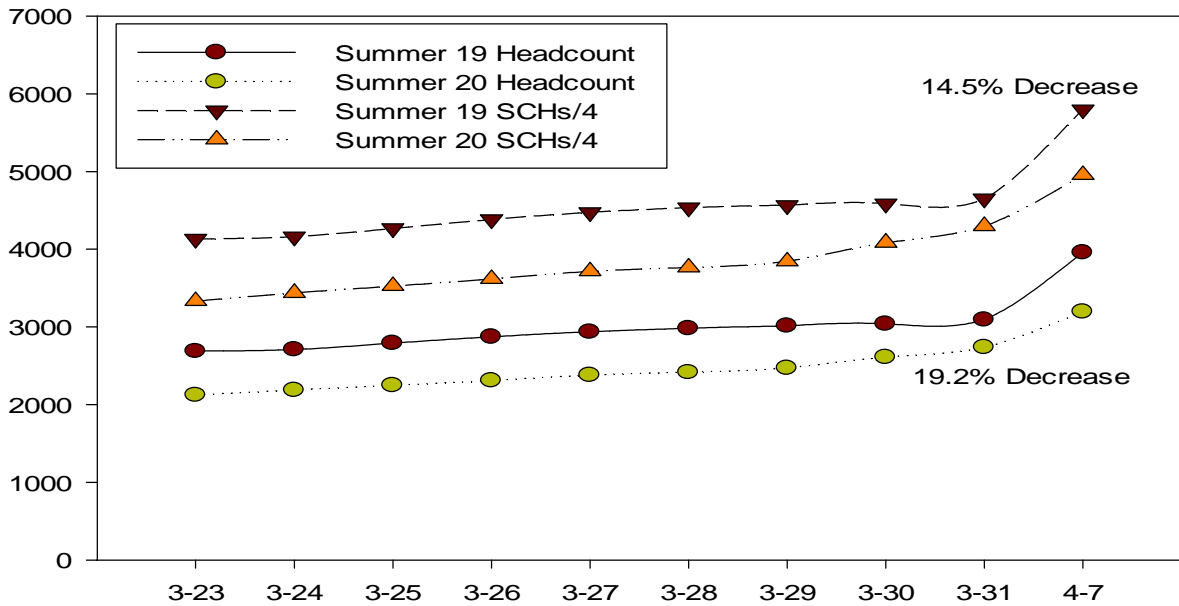
Fall 20 vs. Fall 19 Registration Trends



Fall Enrollment Funnel FTFT Bachelor's Seeking



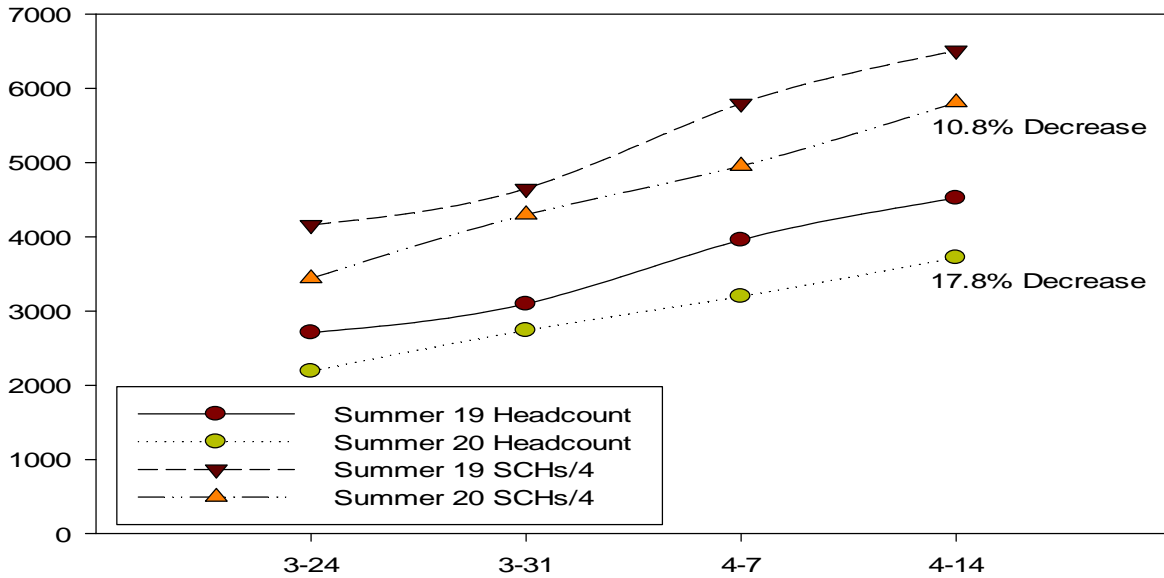
Summer 20 vs. Summer 19 Registration Trends



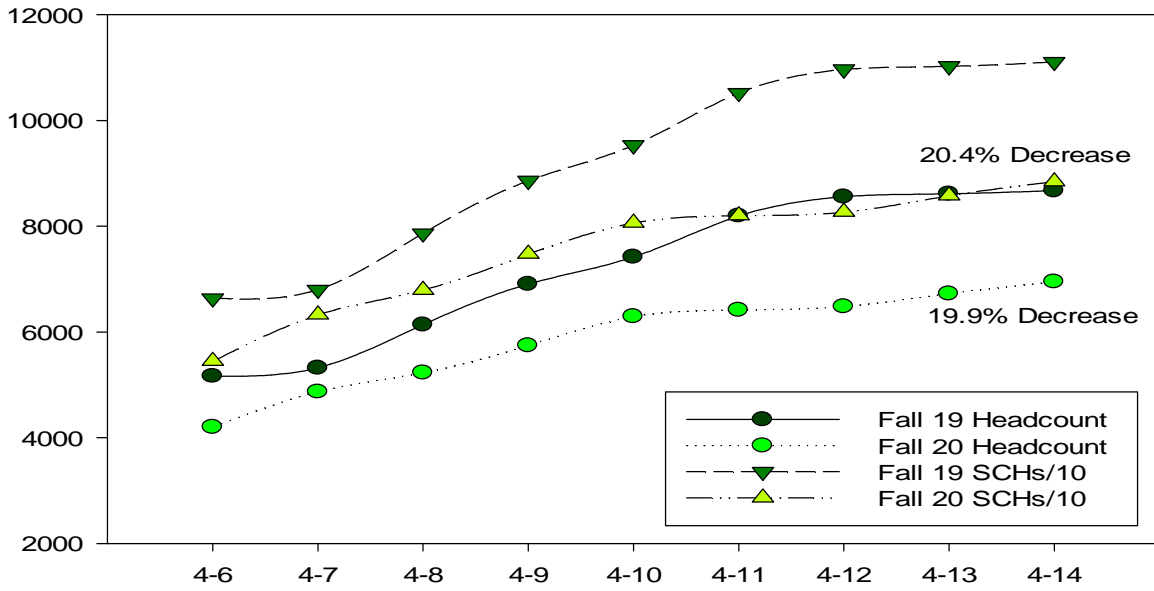
Enrollment Update as of April 14, 2020

Category	2019 Headcounts	2020 Headcounts	Headcount Difference	% Difference
Summer Course Registrations	4,524	3,720	-804	-17.8%
Fall Course Registrations	8,674	6,951	-1,723	-19.9%
New Freshman Admits	10,553	9,757	-796	-7.5%
New Freshman Confirmations	2,406	2,028	-378	-15.7%

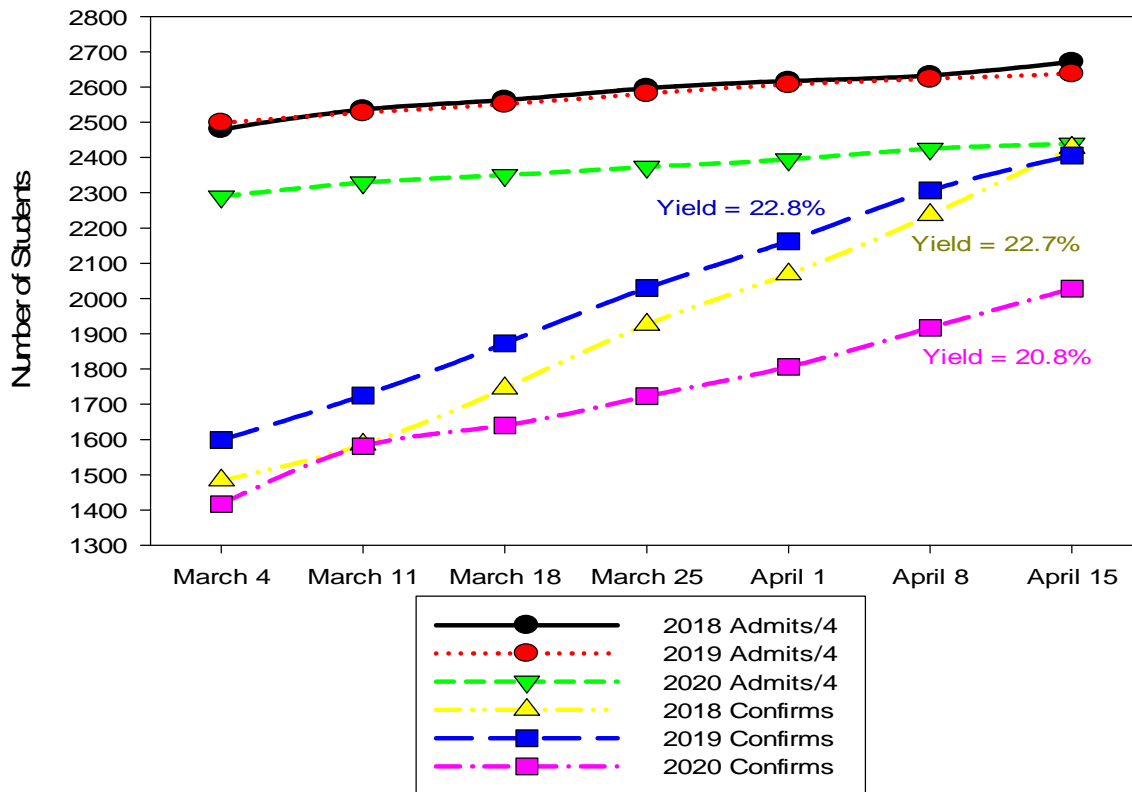
Summer 20 vs. Summer 19 Registration Trends



Fall 20 vs. Fall 19 Registration Trends



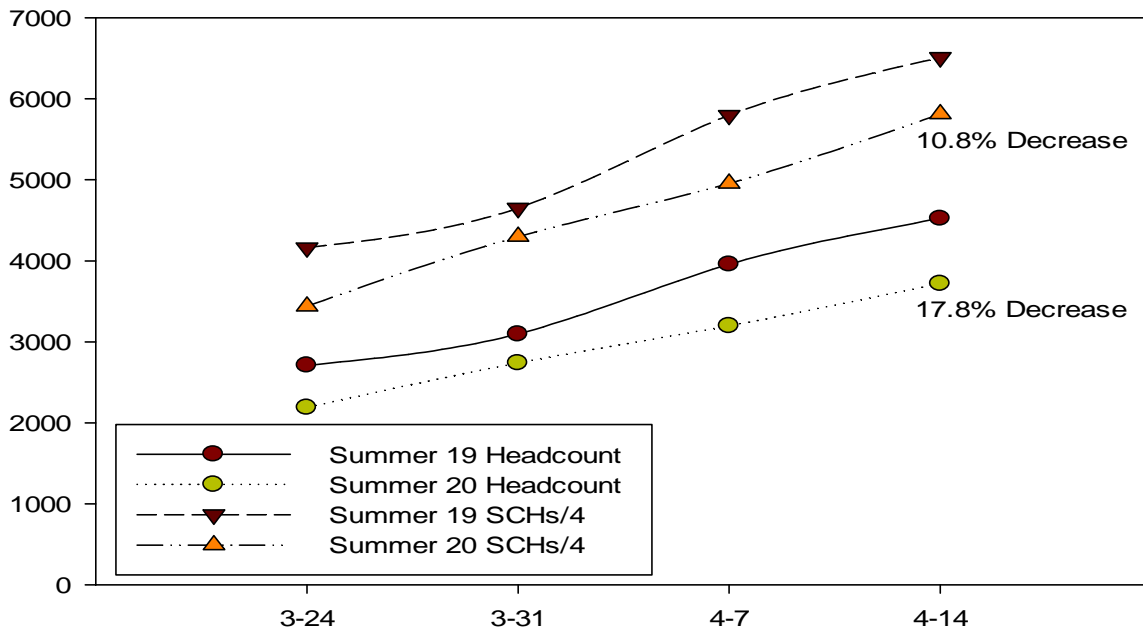
Fall Enrollment Funnel FTFT Bachelor's Seeking



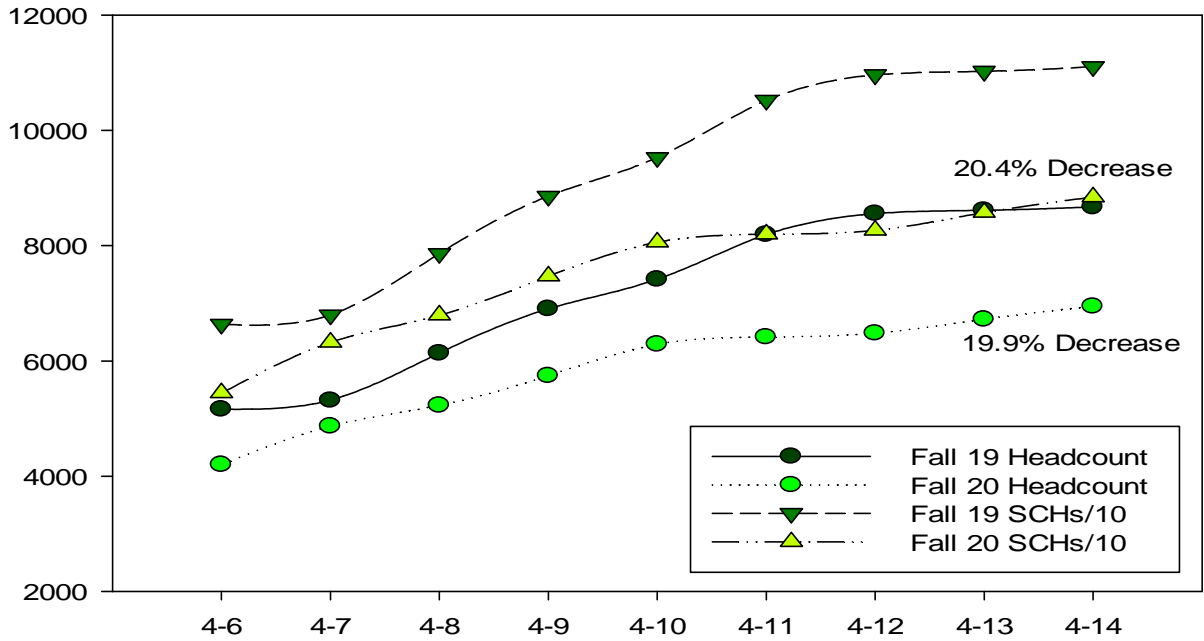
Enrollment Update as of April 21, 2020

Category	2019 Headcounts	2020 Headcounts	Headcount Difference	% Difference
Summer Course Registrations	4,524	3,720	-804	-17.8%
Fall Course Registrations	8,674	6,951	-1,723	-19.9%
New Freshman Admits	10,612	9,865	-747	-7.0%
New Freshman Confirmations	2,601	2,152	-449	-17.3%

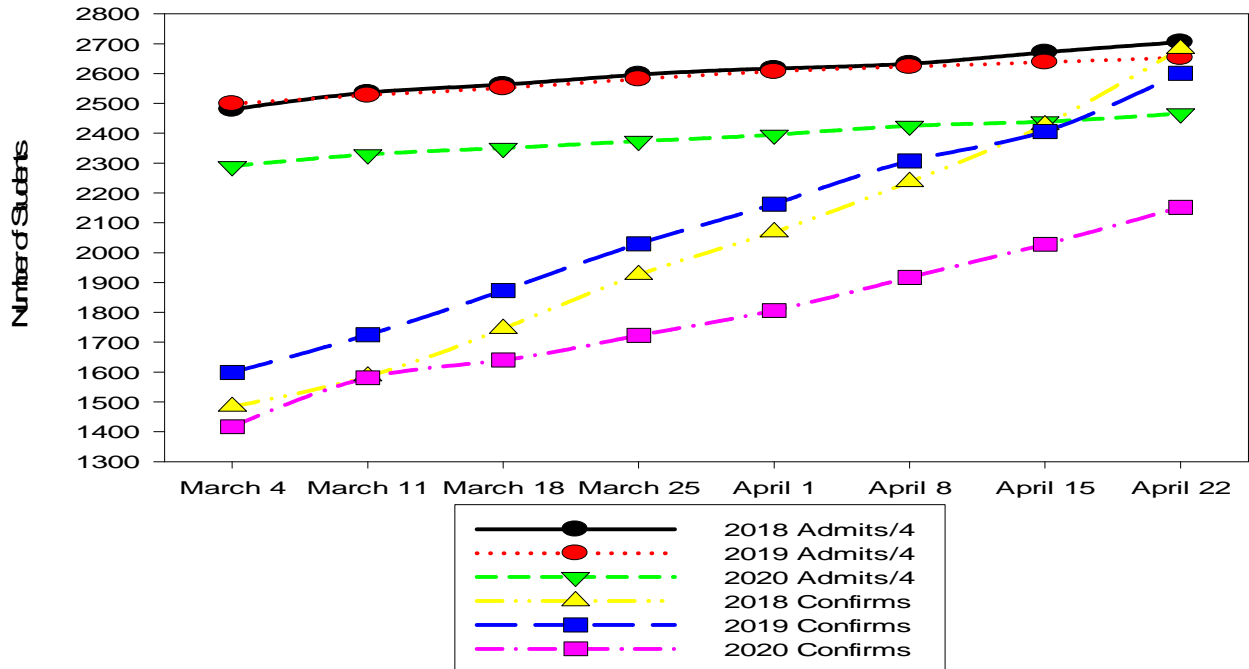
Summer 20 vs. Summer 19 Registration Trends



Fall 20 vs. Fall 19 Registration Trends



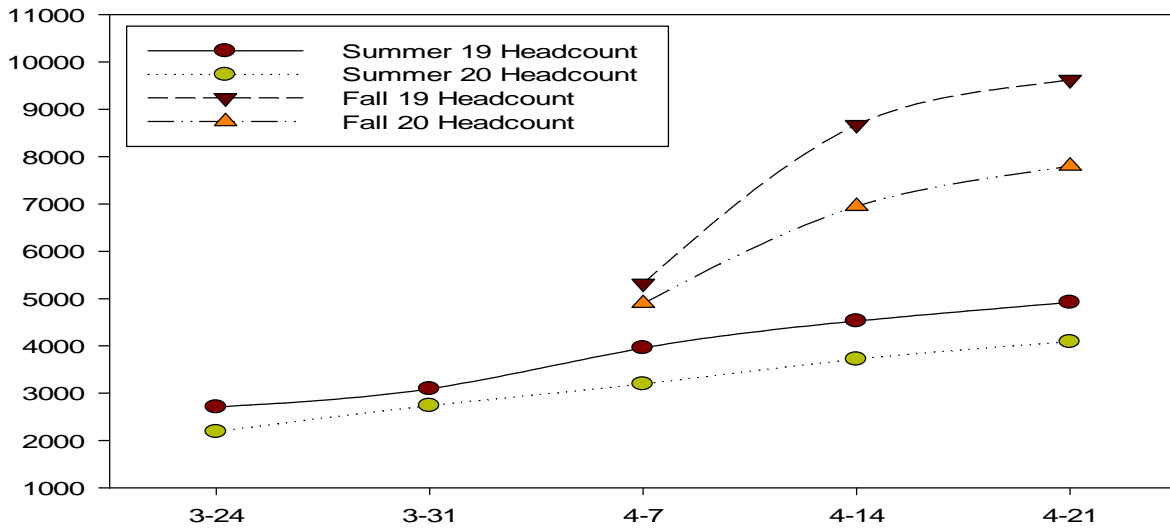
Fall Enrollment Funnel FTFT Bachelor's Seeking



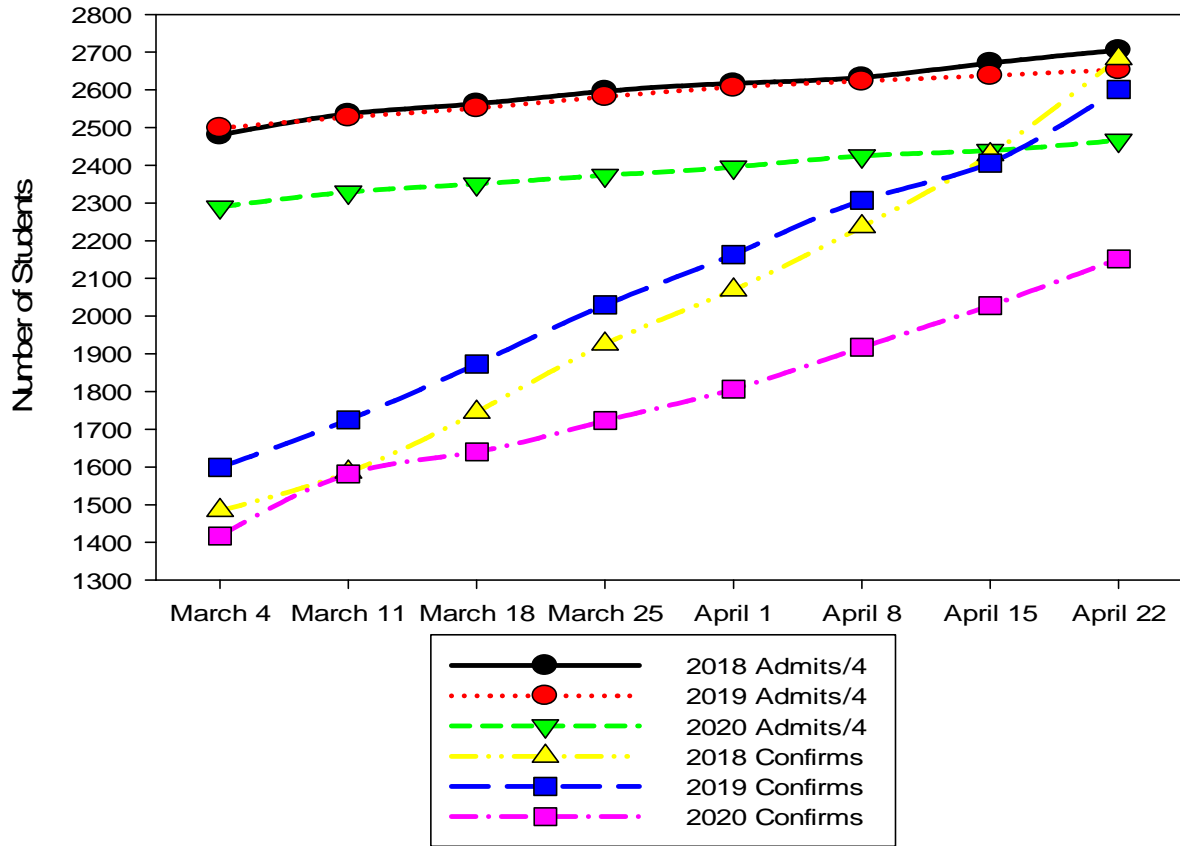
Enrollment Update as of April 22, 2020

Category	2019 Headcounts	2020 Headcounts	Headcount Difference	% Difference
Summer Course Registrations	4,922	4,091	-831	-16.9%
Fall Course Registrations	9,624	7,799	-1,825	-19.0%
New Freshman Admits	10,612	9,865	-747	-7.0%
New Freshman Confirmations	2,601	2,152	-449	-17.3%

Summer and Fall Registration Trends - 2019 vs. 2020



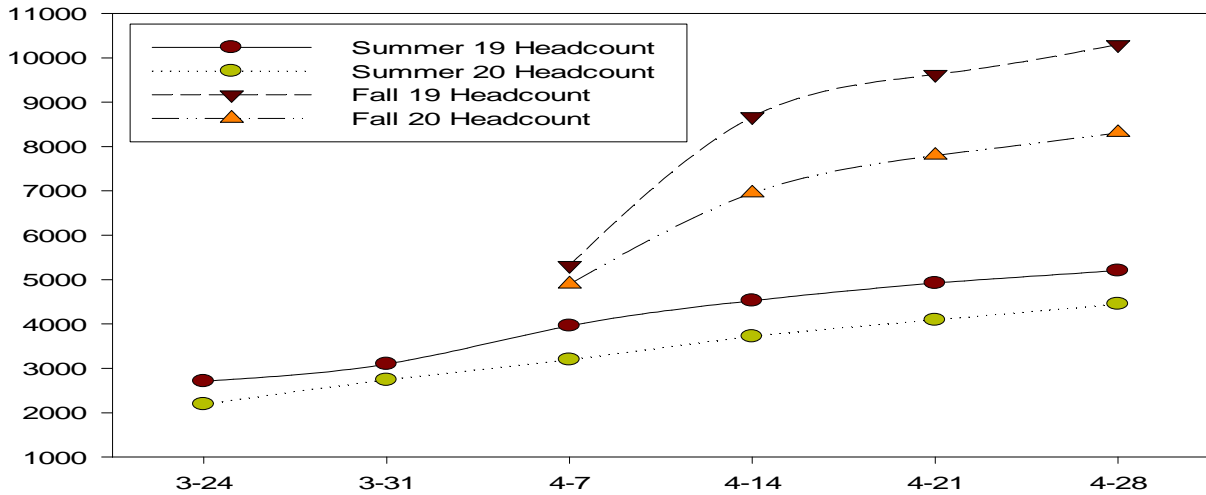
Fall Enrollment Funnel FTFT Bachelor's Seeking



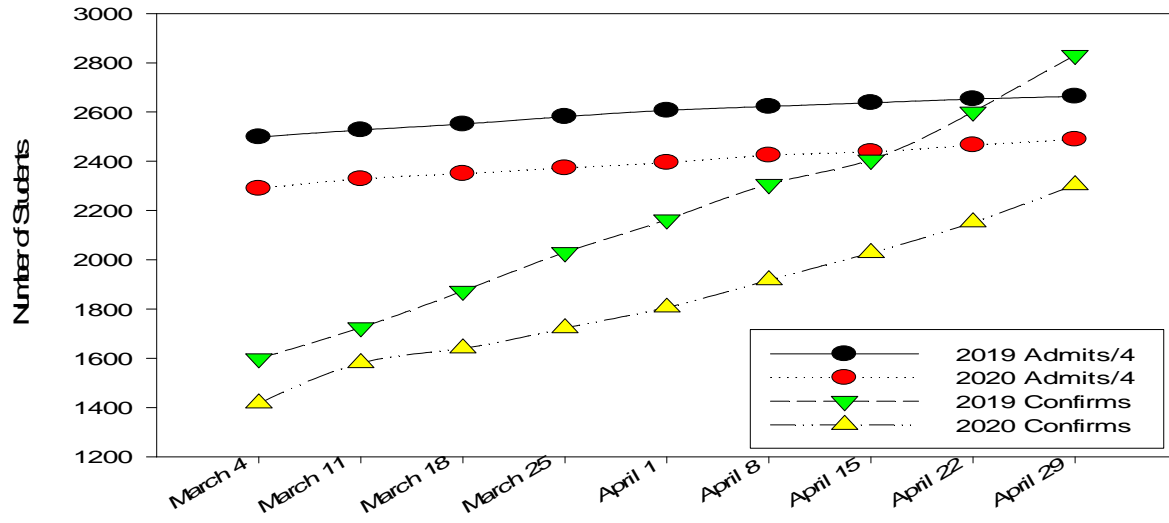
Enrollment Update as of April 29, 2020

Category	2019 Headcounts	2020 Headcounts	Headcount Difference	% Difference
Summer Course Registrations	5,202	4,451	-751	-14.4%
Fall Course Registrations	10,300	8,309	-1,991	-19.3%
New Freshman Admits	10,654	9,954	-700	-6.6%
New Freshman Confirmations	2,831	2,304	-527	-18.6%

Summer and Fall Registration Trends - 2019 vs. 2020



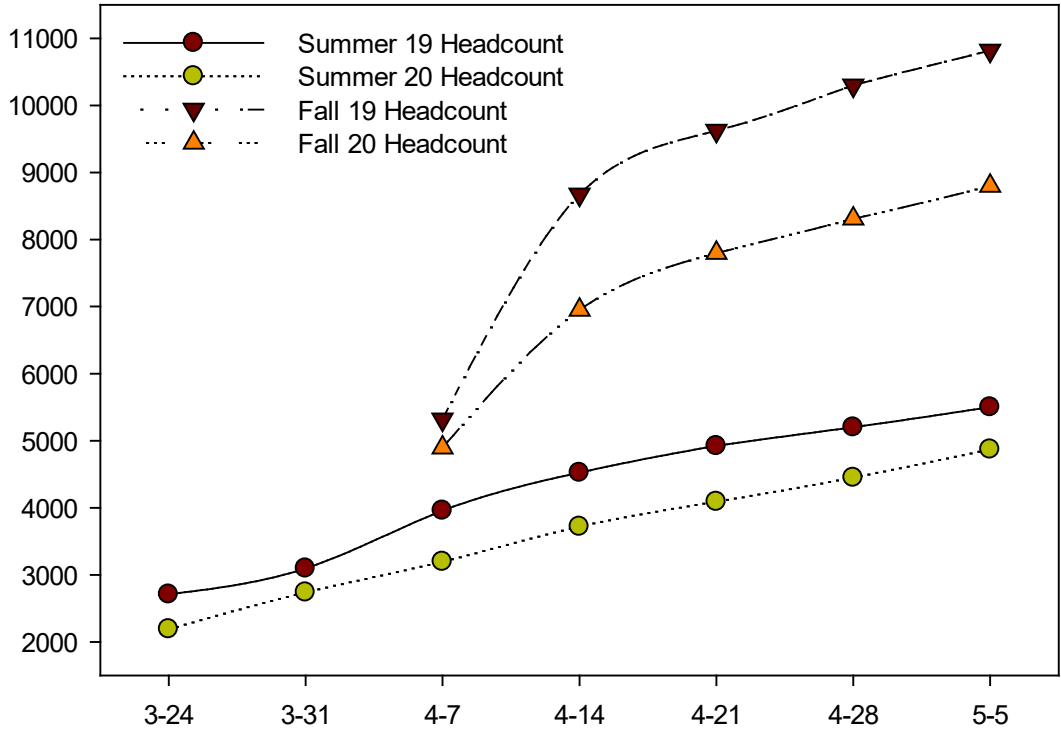
Fall Enrollment Funnel FTFT Bachelor's Seeking



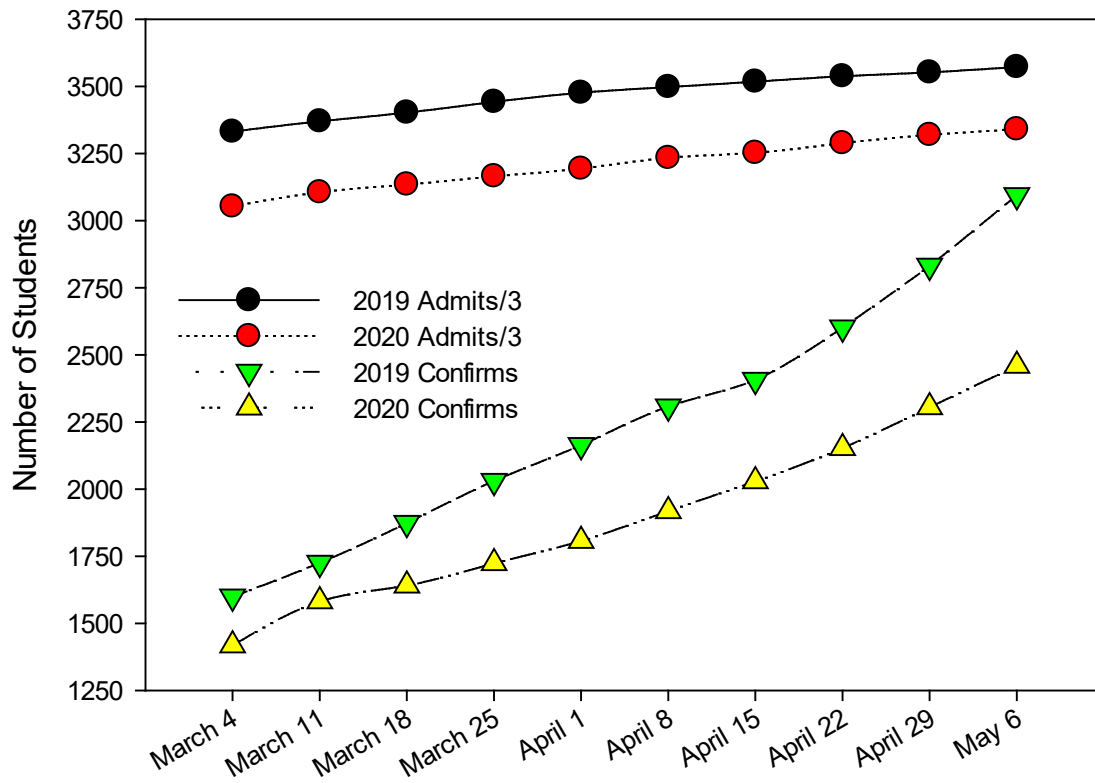
Enrollment Update as of May 6, 2020

Category	2019 Headcounts	2020 Headcounts	Headcount Difference	% Difference
Summer Course Registrations	5,501	4,871	-630	-11.5%
Fall Course Registrations	10,819	8,798	-2,021	-18.7%
New Freshman Admits	10,715	10,019	-696	-6.5%
New Freshman Confirmations	3,094	2,458	-636	-20.6%

Summer and Fall Registration Trends - 2019 vs. 2020



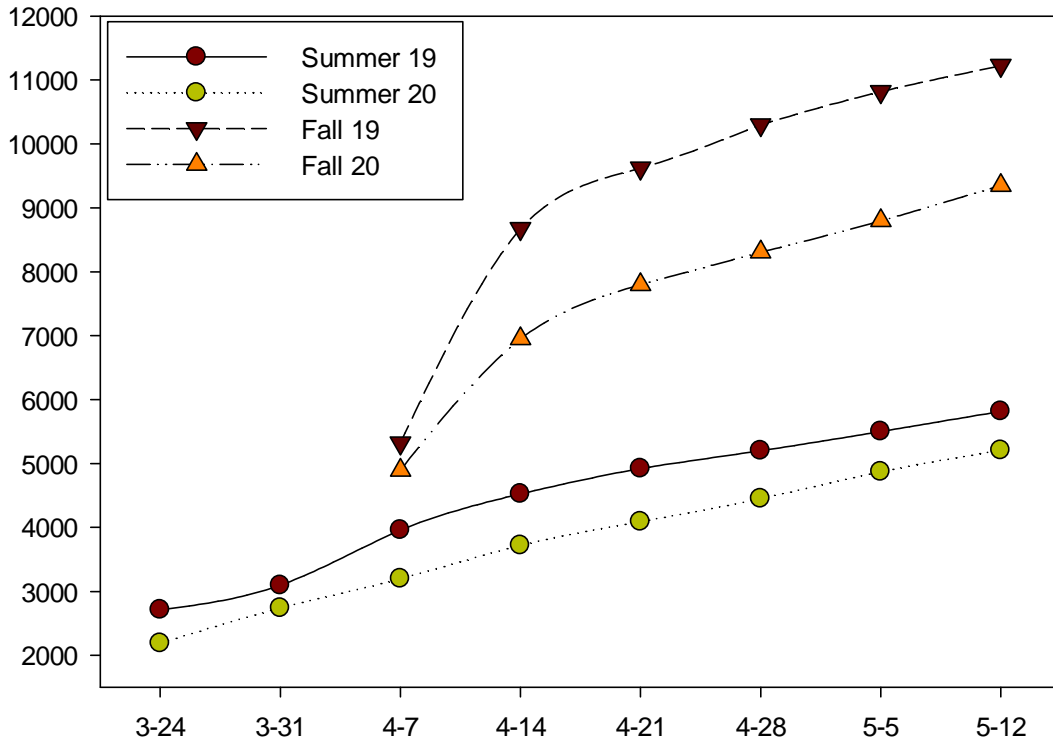
Fall Enrollment Funnel FTFT Bachelor's Seeking



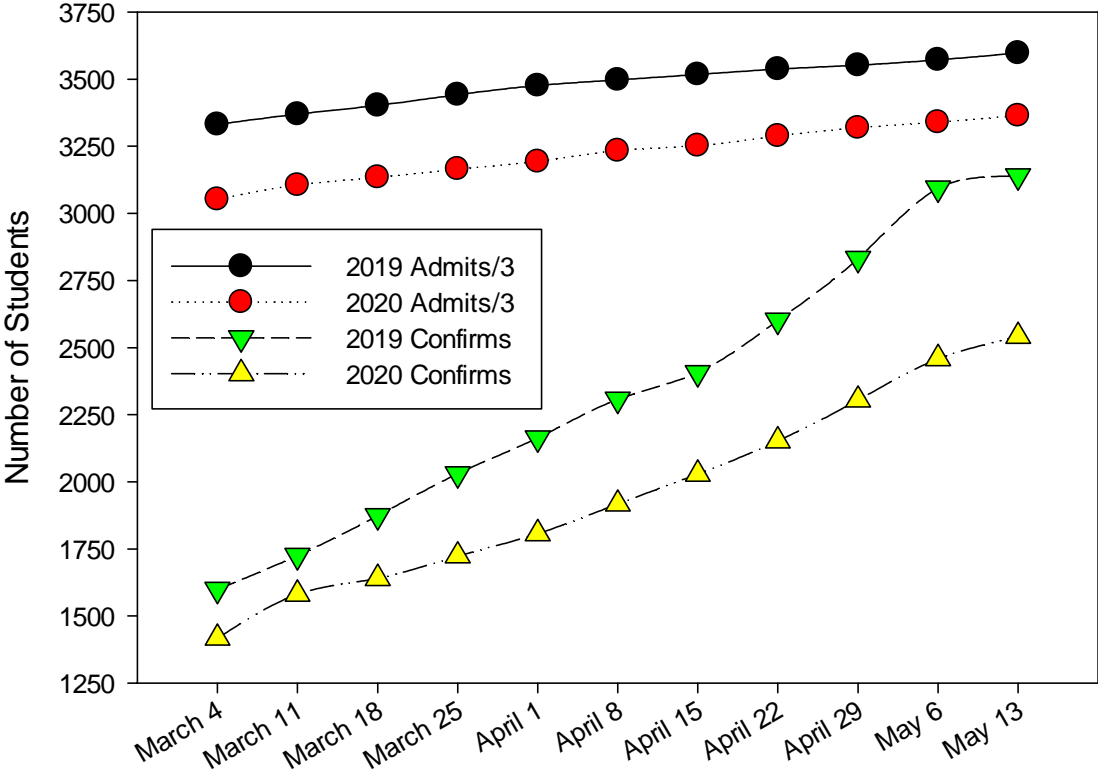
Enrollment Update as of May 13, 2020

Category	2019 Headcounts	2020 Headcounts	Headcount Difference	% Difference
Summer Course Registrations	5,815	5,208	-607	-10.4%
Fall Course Registrations	11,227	9,351	-1,876	-16.7%
New Freshman Admits	10,792	10,091	-701	-6.5%
New Freshman Confirmations	3,140	2,541	-599	-19.1%

Summer and Fall Headcount Registration Trends - 2019 vs. 2020



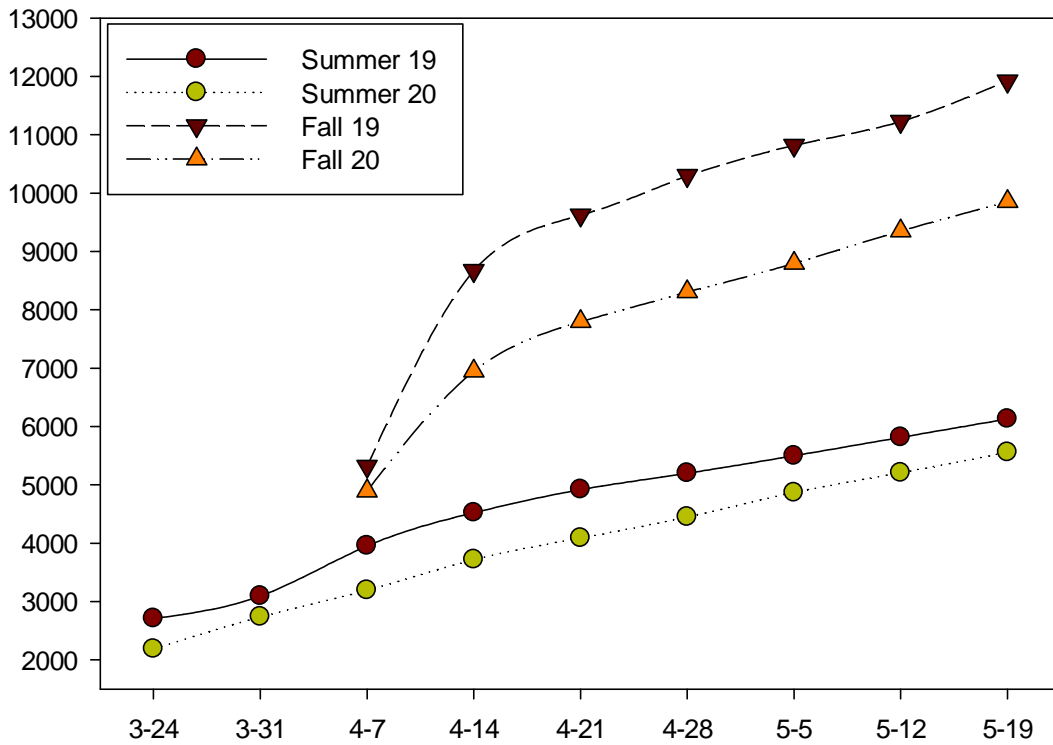
Fall Enrollment Funnel FTFT Bachelor's Seeking Headcounts



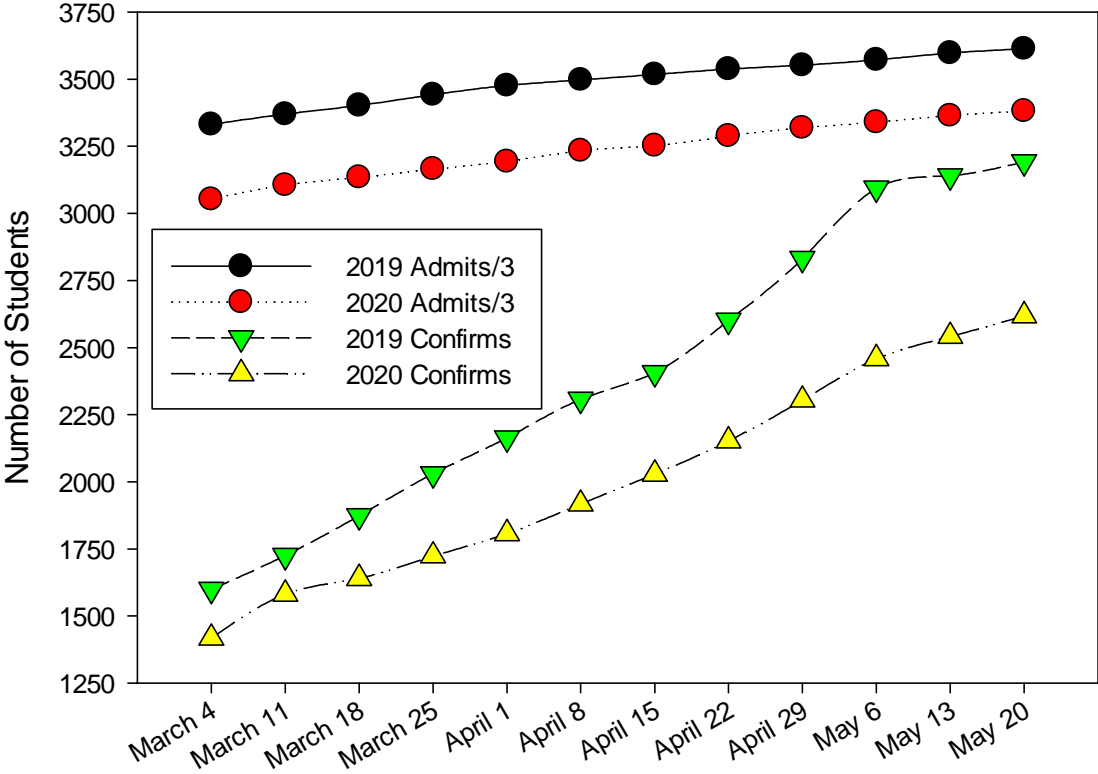
Enrollment Update as of May 20, 2020

Category	2019 Headcounts	2020 Headcounts	Headcount Difference	% Difference
Summer Course Registrations	6,130	5,559	-571	-9.3%
Fall Course Registrations	11,920	9,853	-2,067	-17.3%
New Freshman Admits	10,838	10,144	-694	-6.4%
New Freshman Confirmations	3,192	2,618	-574	-18.0%

Summer and Fall Headcount Registration Trends - 2019 vs. 2020



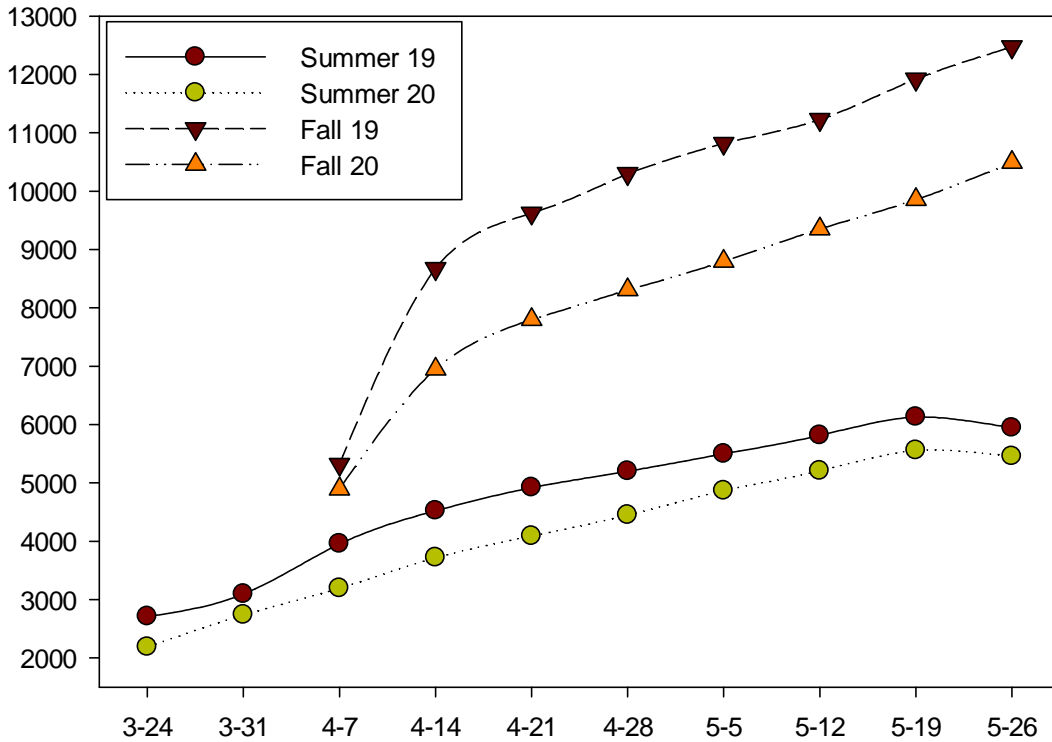
Fall Enrollment Funnel FTFT Bachelor's Seeking Headcounts



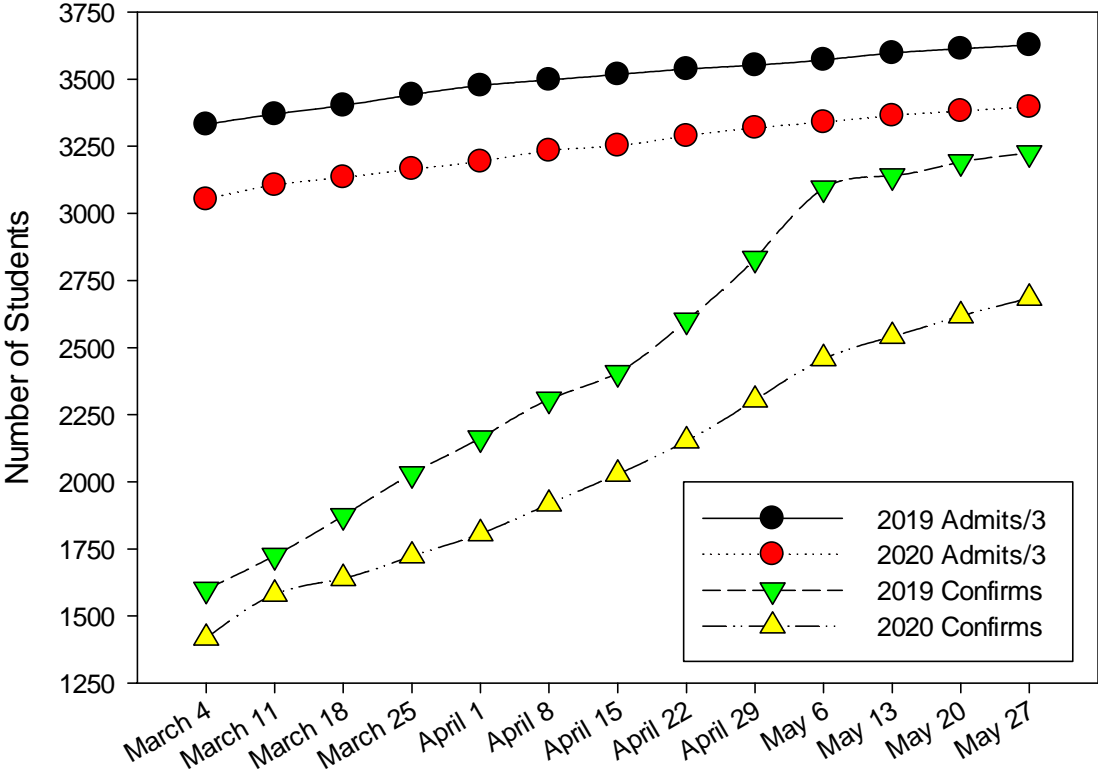
Enrollment Update as of May 27, 2020

Category	2019 Headcounts	2020 Headcounts	Headcount Difference	% Difference
Summer Course Registrations	5,947	5,457	-490	-8.2%
Fall Course Registrations	12,473	10,490	-1,983	-15.9%
New Freshman Admits	10,881	10,187	-694	-6.4%
New Freshman Confirmations	3,225	2,684	-541	-16.8%

Summer and Fall Headcount Registration Trends - 2019 vs. 2020



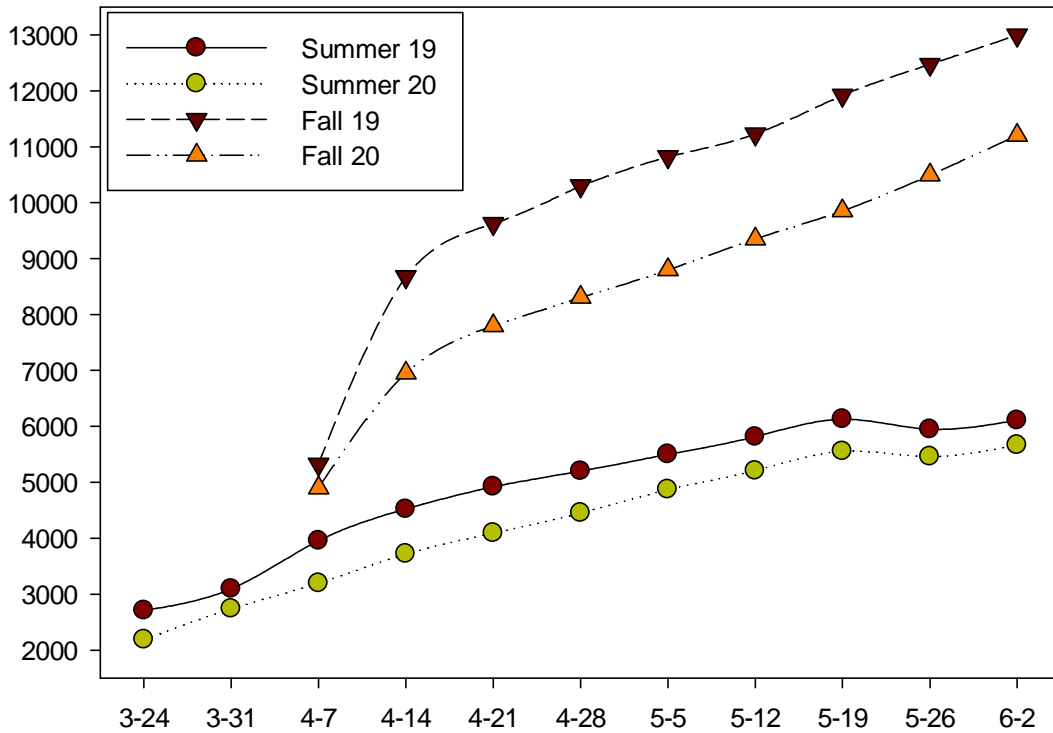
Fall Enrollment Funnel FTFT Bachelor's Seeking Headcounts



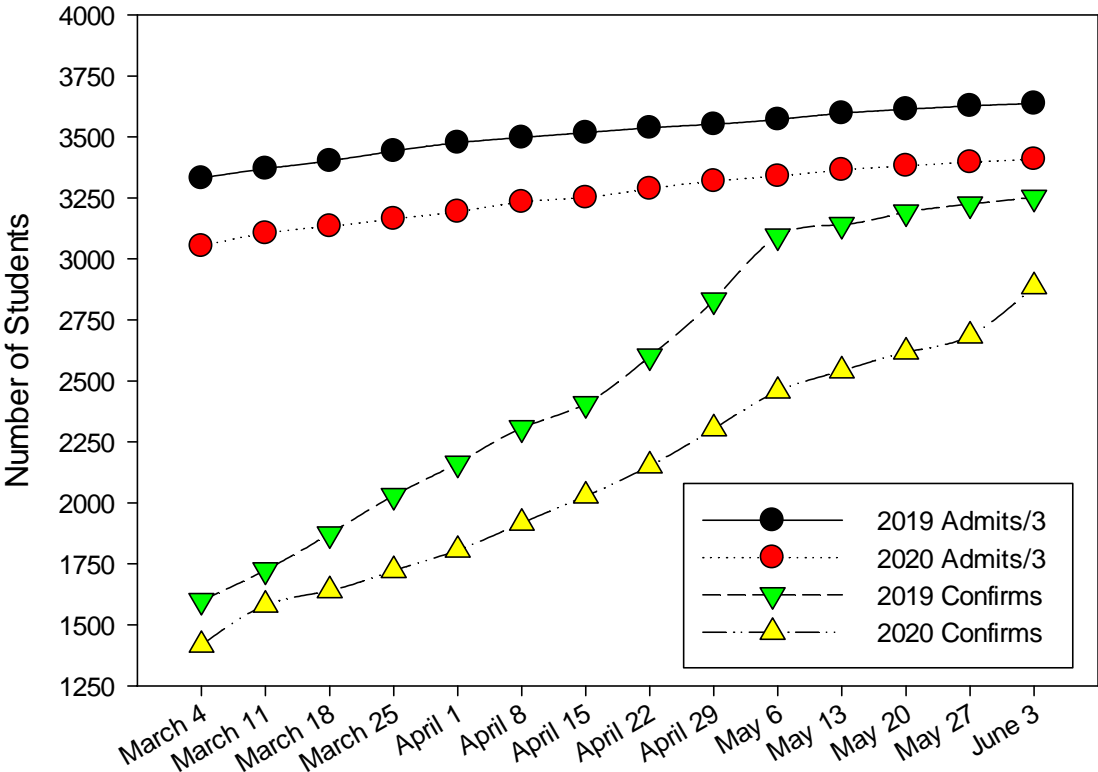
Enrollment Update as of June 3, 2020

Category	2019 Headcounts	2020 Headcounts	Headcount Difference	% Difference
Summer Course Registrations	6,106	5,663	-443	-7.3%
Fall Course Registrations	12,999	11,202	-1,797	-13.8%
New Freshman Admits	10,910	10,227	-683	-6.3%
New Freshman Confirmations	3,252	2,886	-366	-11.3%

Summer and Fall Headcount Registration Trends - 2019 vs. 2020



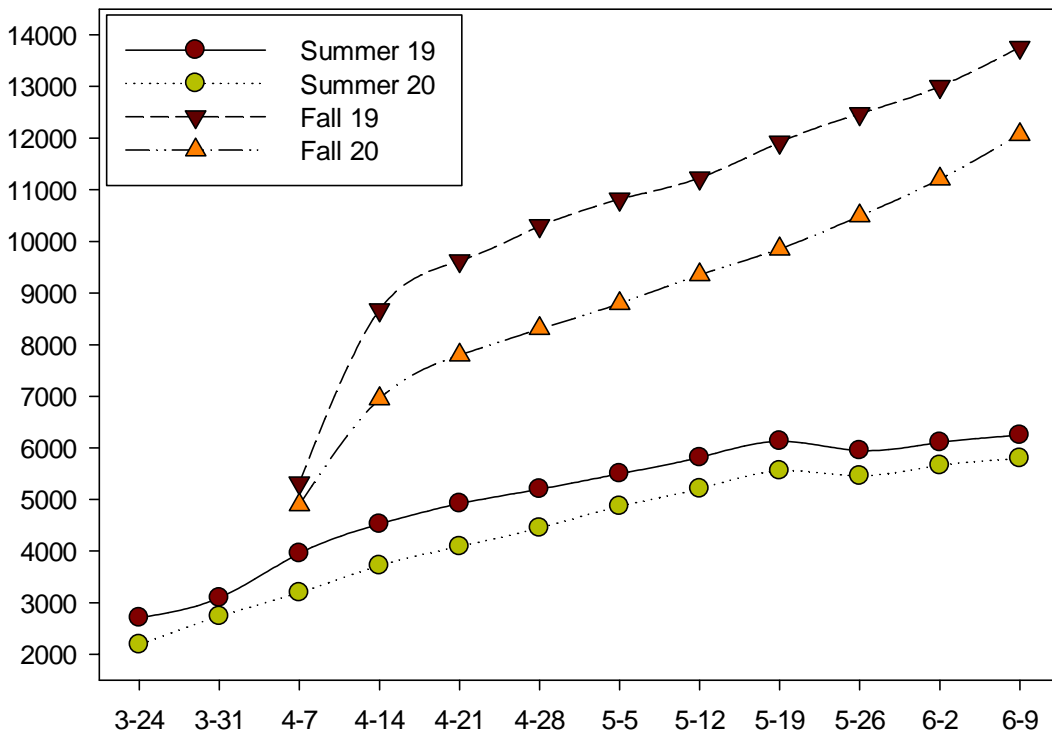
Fall Enrollment Funnel FTFT Bachelor's Seeking Headcounts



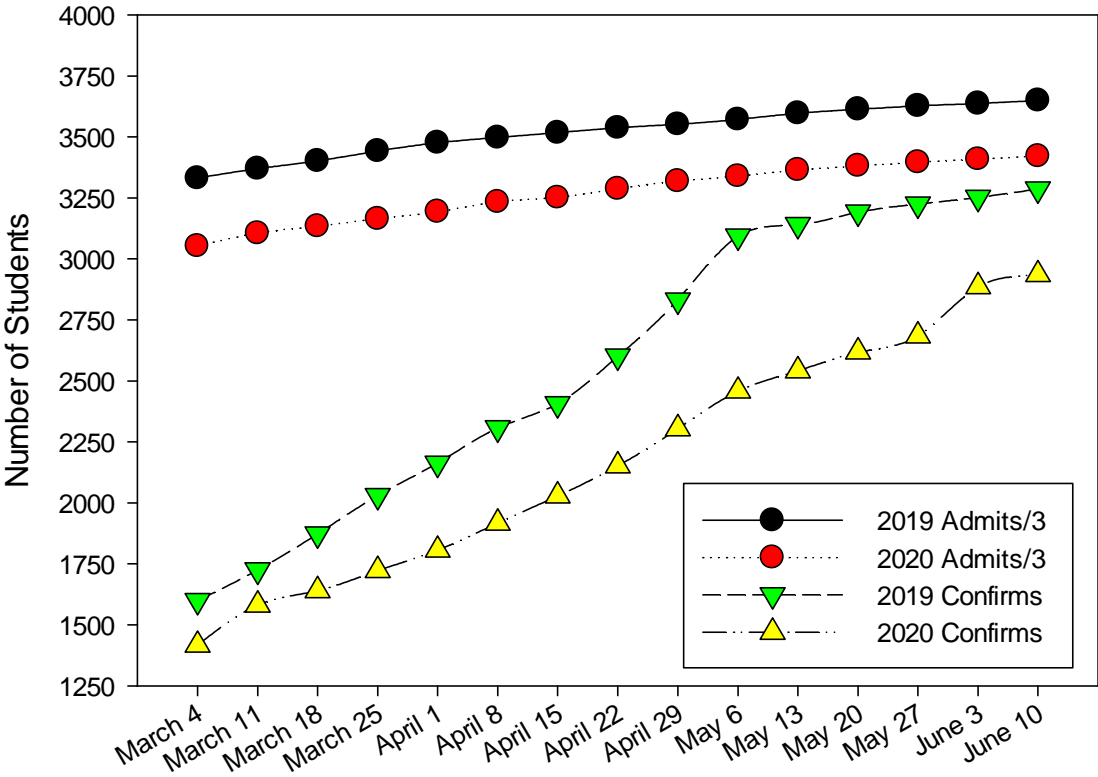
Enrollment Update as of June 10, 2020

Category	2019 Headcounts	2020 Headcounts	Headcount Difference	% Difference
Summer Course Registrations	6,248	5,794	-454	-7.3%
Fall Course Registrations	13,760	12,070	-1,690	-12.3%
New Freshman Admits	10,947	10,262	-685	-6.3%
New Freshman Confirmations	3,286	2,935	-351	-10.7%

Summer and Fall Headcount Registration Trends - 2019 vs. 2020



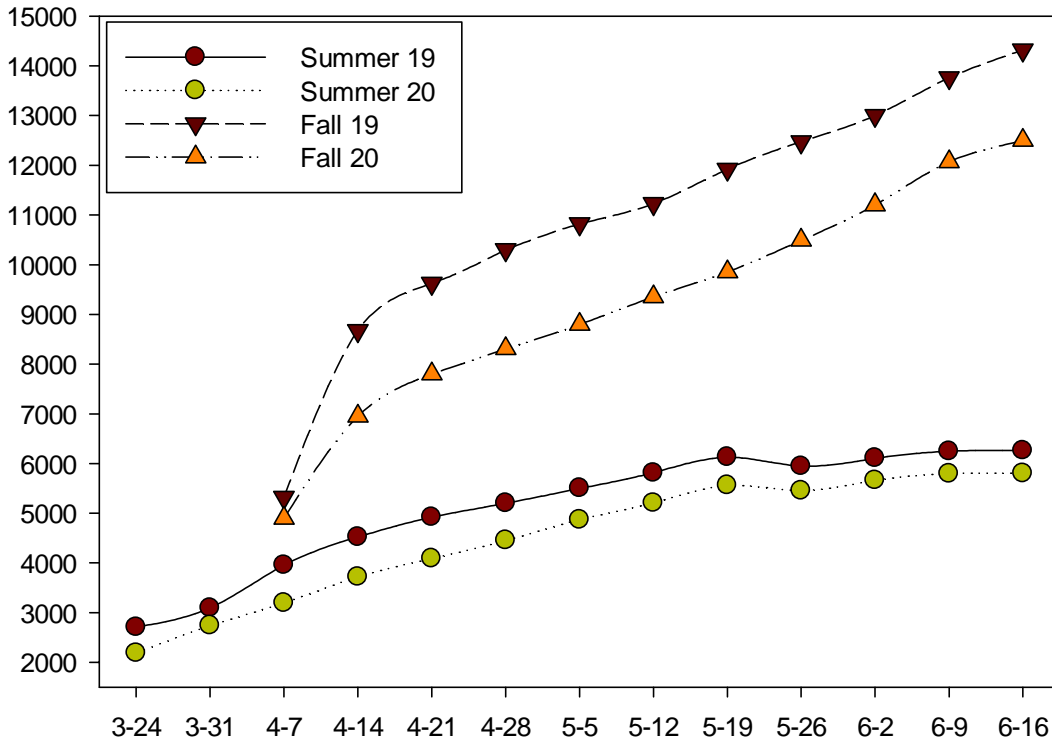
Fall Enrollment Funnel FTFT Bachelor's Seeking Headcounts



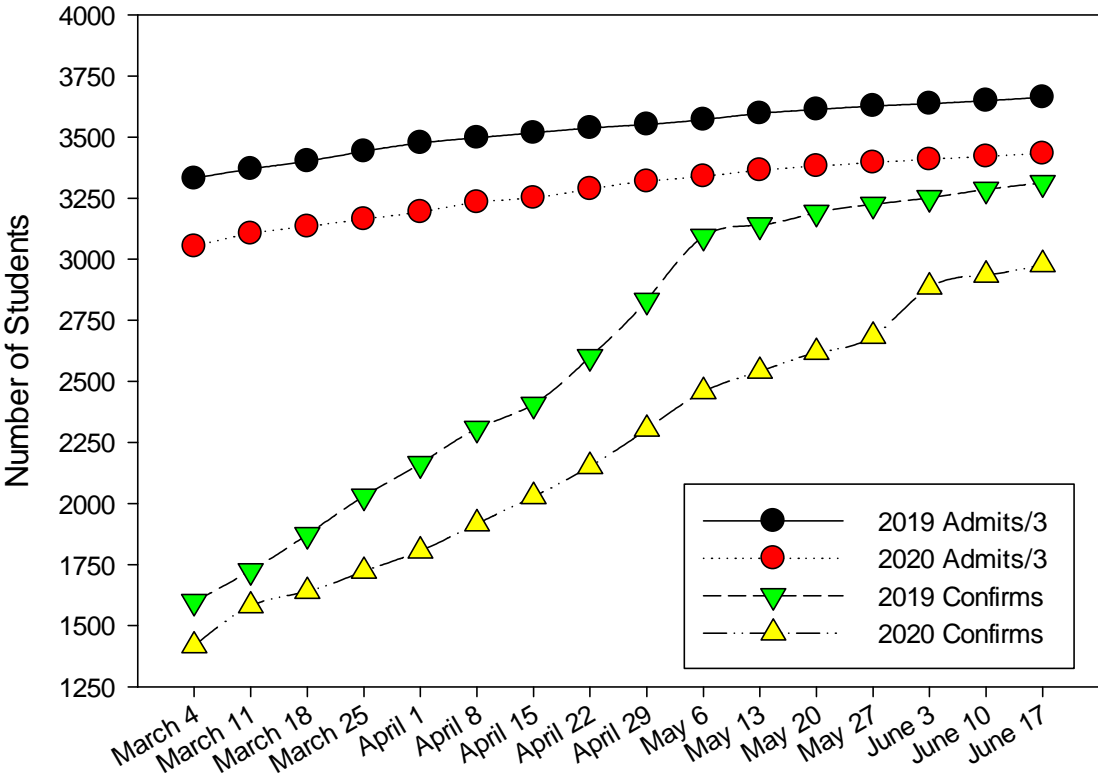
Enrollment Update as of June 17, 2020

Category	2019 Headcounts	2020 Headcounts	Headcount Difference	% Difference
Summer Course Registrations	6,260	5,803	-457	-7.3%
Fall Course Registrations	14,319	12,499	-1,820	-12.7%
New Freshman Admits	10,989	10,299	-690	-6.3%
New Freshman Confirmations	3,313	2,978	-335	-10.1%

Summer and Fall Headcount Registration Trends - 2019 vs. 2020



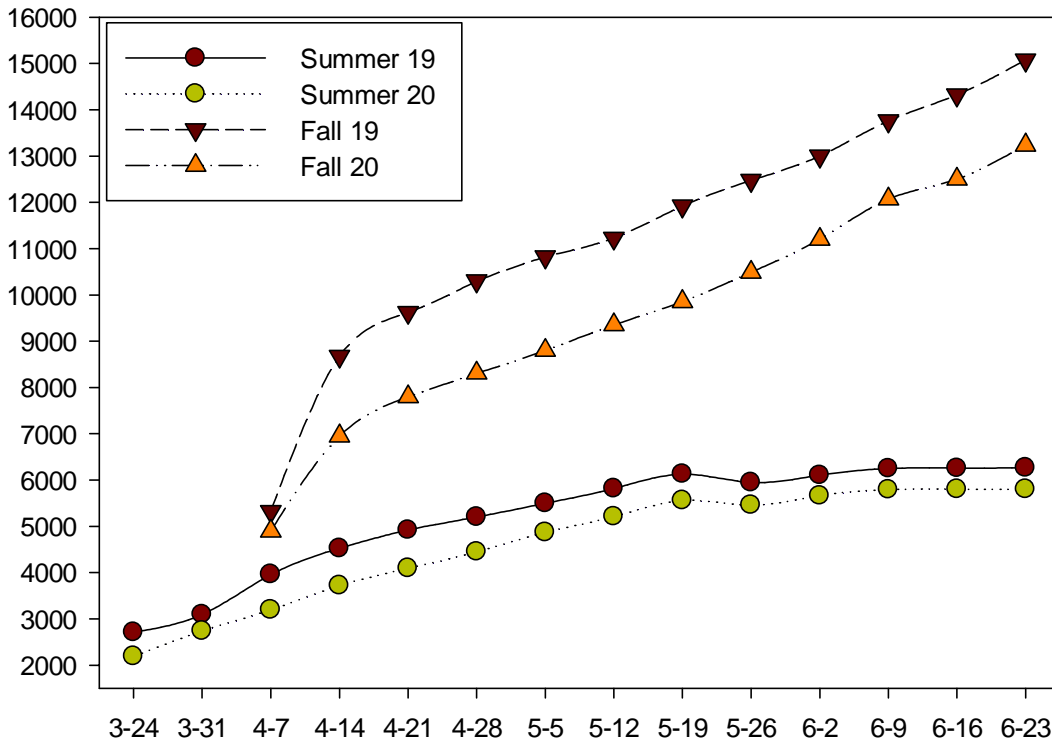
Fall Enrollment Funnel FTFT Bachelor's Seeking Headcounts



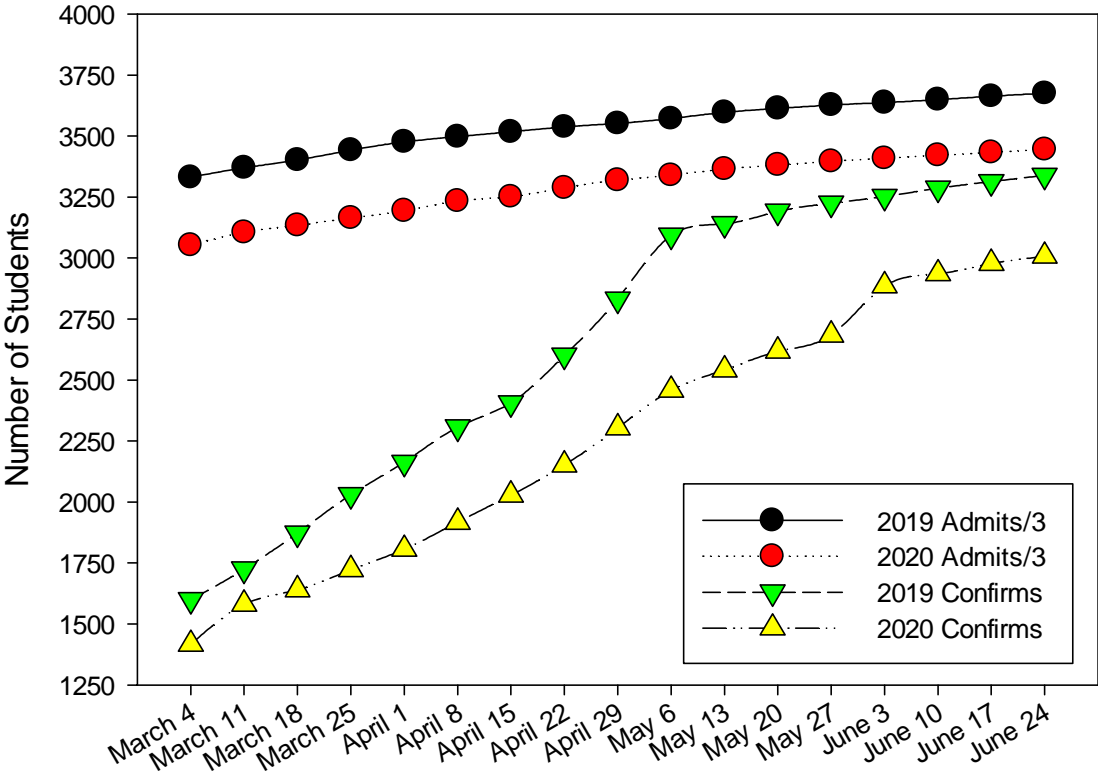
Enrollment Update as of June 24, 2020

Category	2019 Headcounts	2020 Headcounts	Headcount Difference	% Difference
Summer Course Registrations	6,264	5,804	-460	-7.3%
Fall Course Registrations	15,076	13,235	-1,841	-12.2%
New Freshman Admits	11,024	10,335	-689	-6.3%
New Freshman Confirmations	3,339	3,007	-332	-9.9%

Summer and Fall Headcount Registration Trends - 2019 vs. 2020



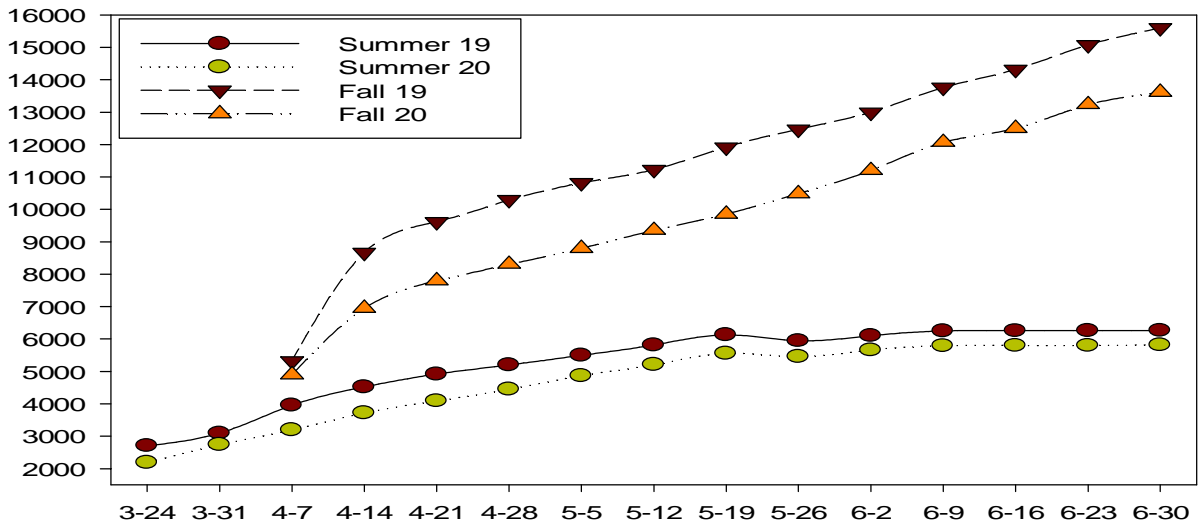
Fall Enrollment Funnel FTFT Bachelor's Seeking Headcounts



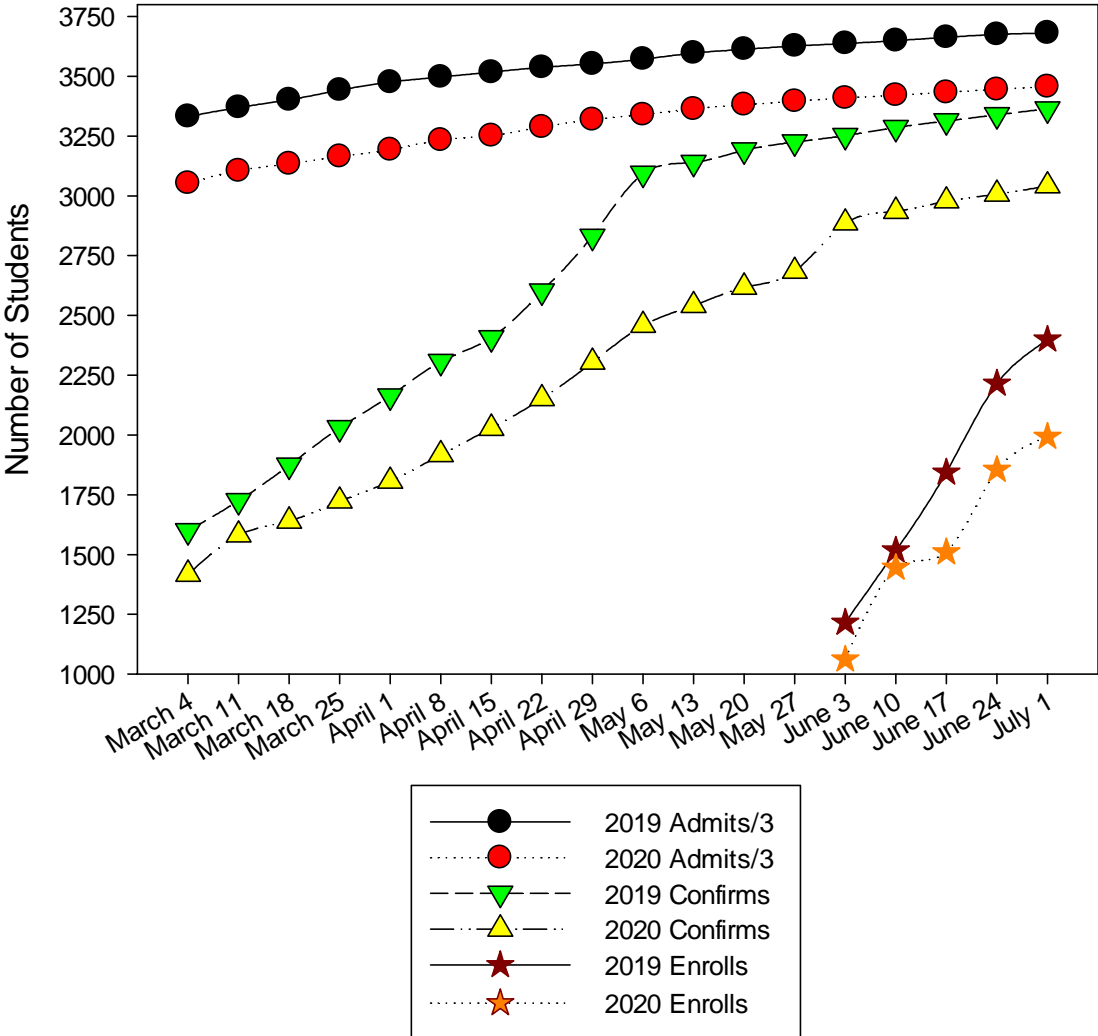
Enrollment Update as of July 1, 2020

Category	2019 Headcounts	2020 Headcounts	Headcount Difference	% Difference
Summer Course Registrations	6,268	5,821	-447	-7.1%
Fall Course Registrations	15,600	13,616	-1,984	-12.7%
New Freshman Admits	11,044	10,372	-672	-6.1%
New Freshman Confirmations	3,364	3,041	-323	-9.6%
New Freshman Enrollments	2,400	1,993	-407	-17.0%

Summer and Fall Headcount Registration Trends - 2019 vs. 2020



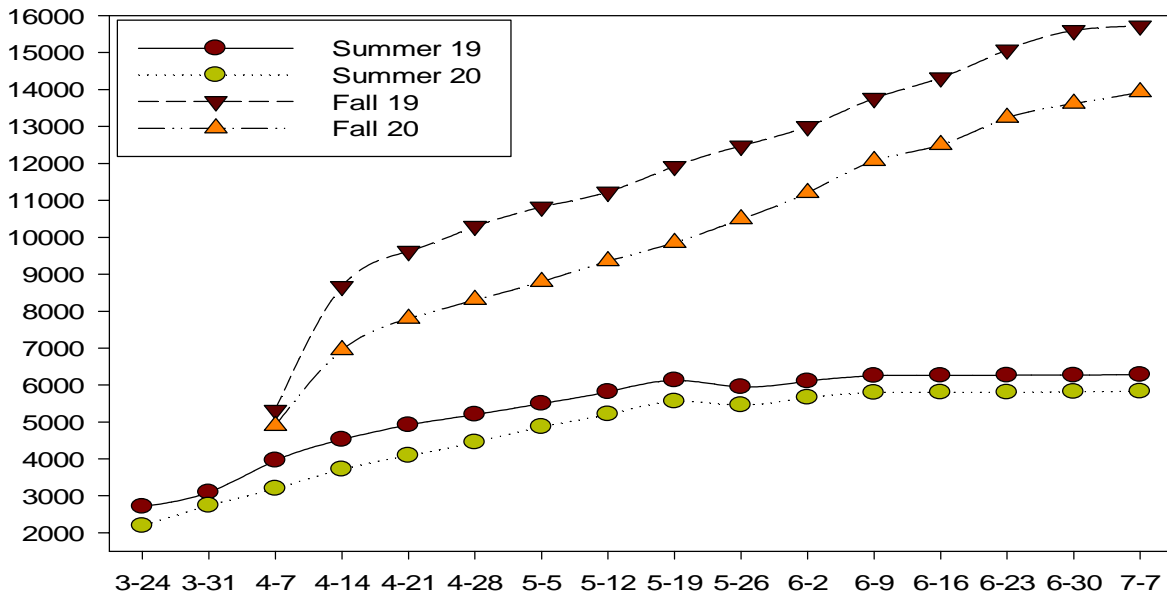
Fall Enrollment Funnel FTFT Bachelor's Seeking Headcounts



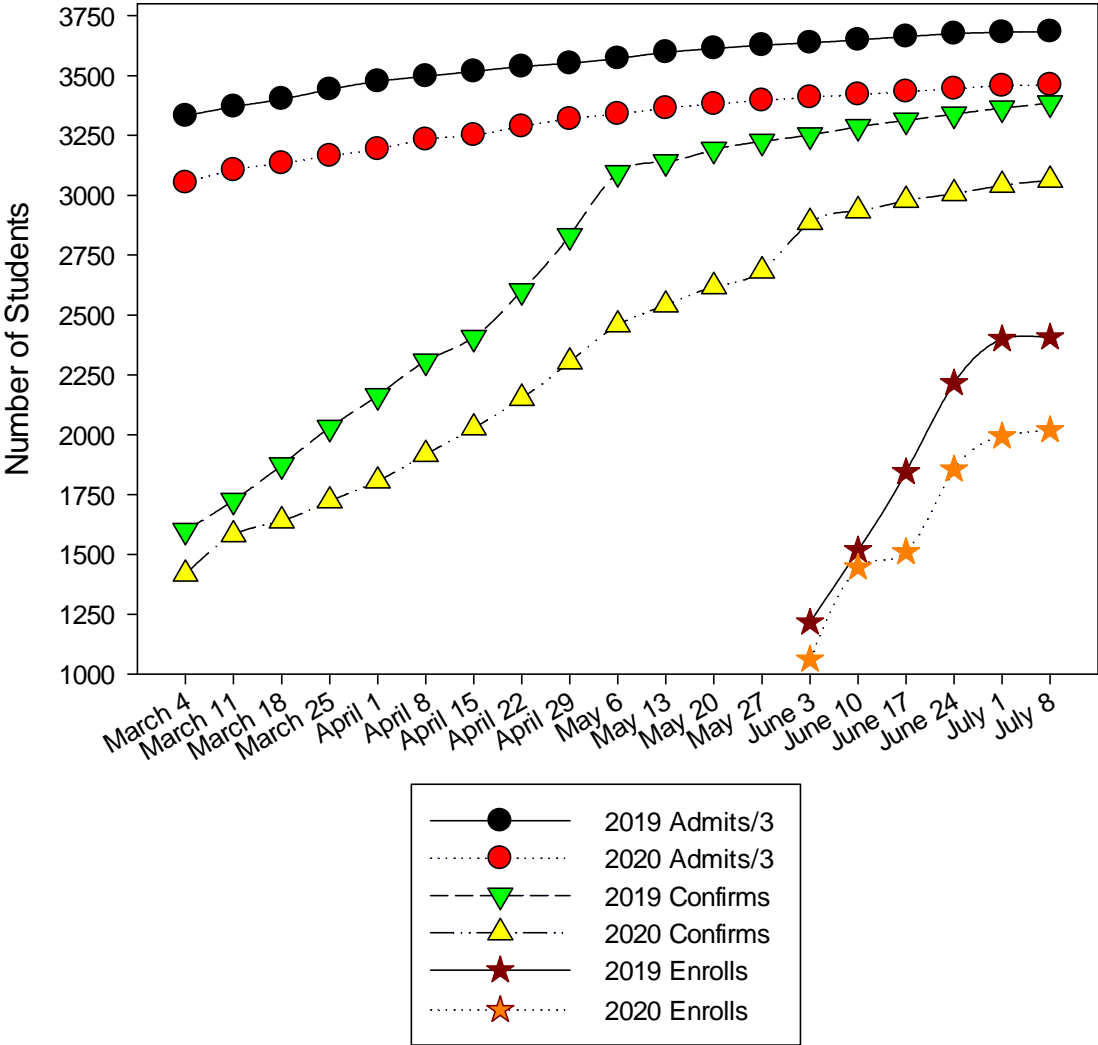
Enrollment Update as of July 8, 2020

Category	2019 Headcounts	2020 Headcounts	Headcount Difference	% Difference
Summer Course Registrations	6,280	5,826	-454	-7.2%
Fall Course Registrations	15,724	13,925	-1,799	-11.4%
New Freshman Admits	11,051	10,384	-667	-6.0%
New Freshman Confirmations	3,385	3,063	-322	-9.5%
New Freshman Enrollments	2,407	2,020	-387	-16.1%

Summer and Fall Headcount Registration Trends - 2019 vs. 2020



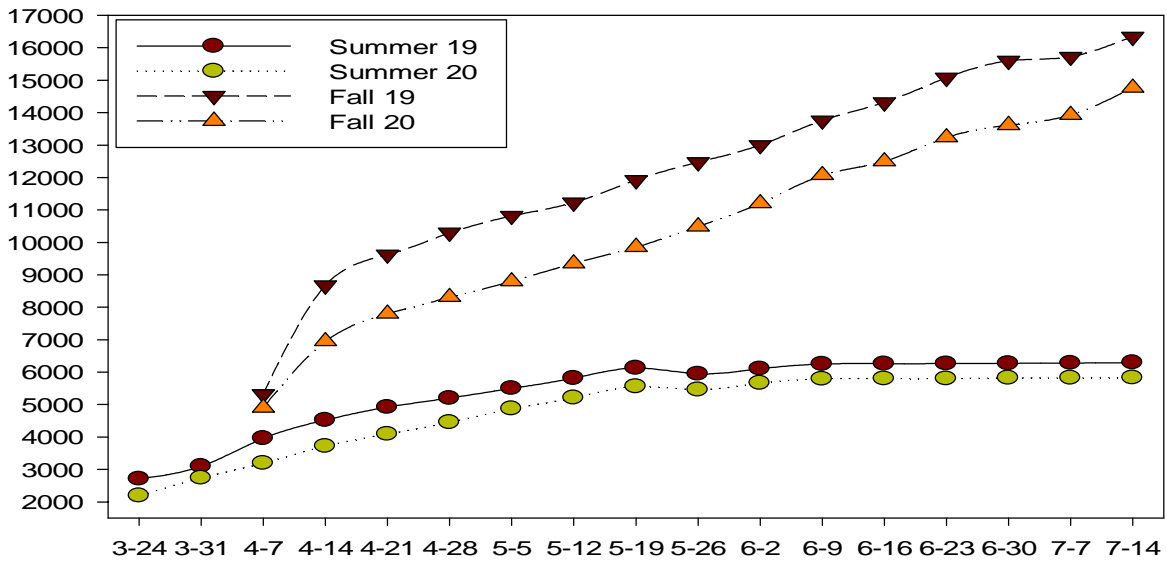
Fall Enrollment Funnel FTFT Bachelor's Seeking Headcounts



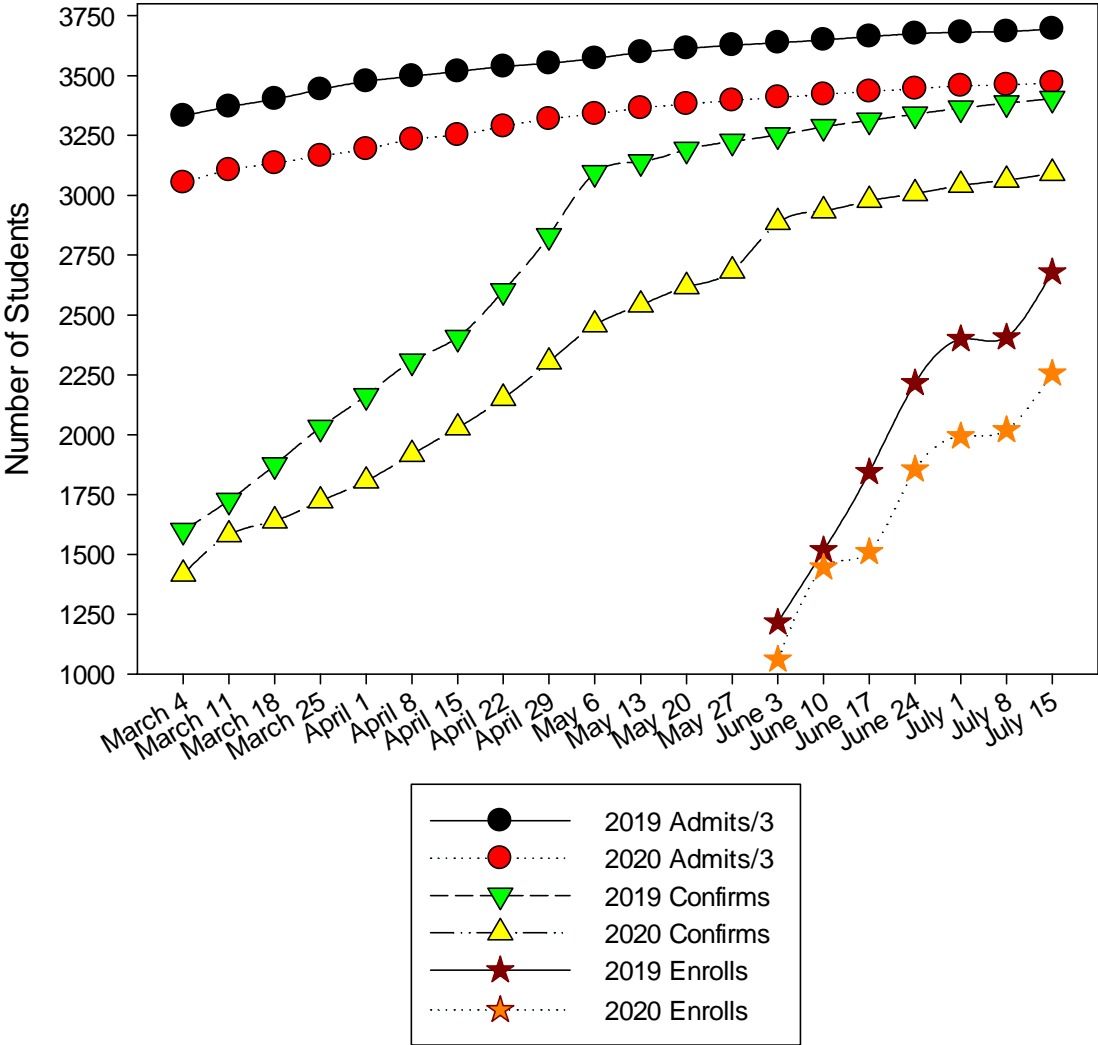
Enrollment Update as of July 15, 2020

Category	2019 Headcounts	2020 Headcounts	Headcount Difference	% Difference
Summer Course Registrations	6,293	5,830	-463	-7.4%
Fall Course Registrations	16,342	14,762	-1,580	-9.7%
New Freshman Admits	11,086	10,411	-675	-6.1%
New Freshman Confirmations	3,404	3,092	-312	-9.2%
New Freshman Enrollments	2,679	2,256	-423	-15.8%

Summer and Fall Headcount Registration Trends - 2019 vs. 2020



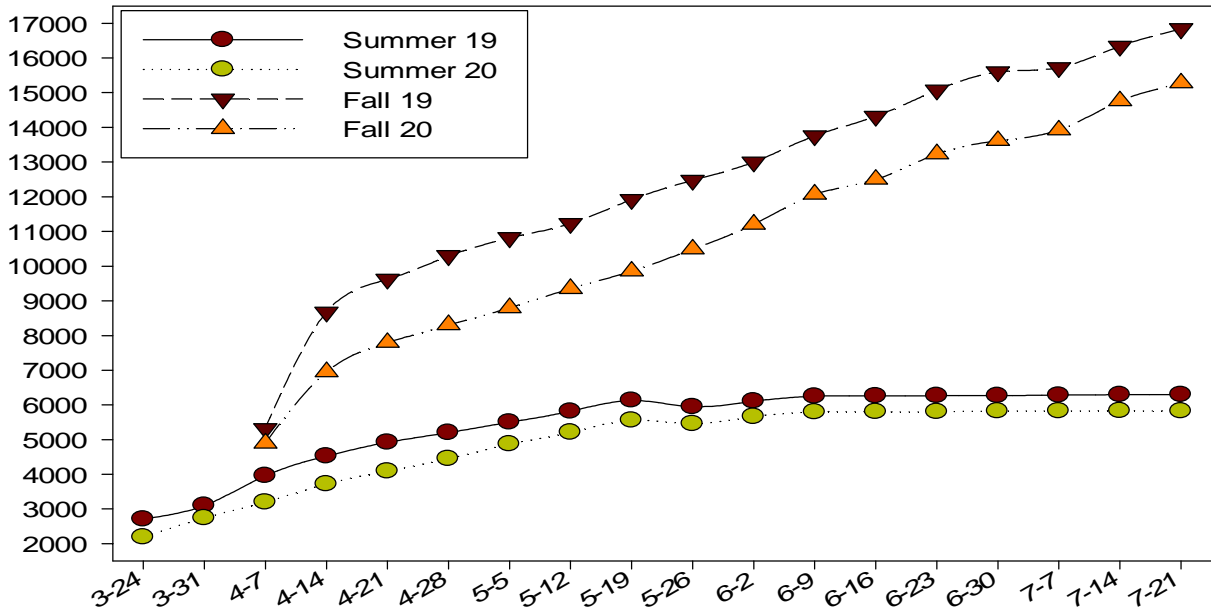
Fall Enrollment Funnel FTFT Bachelor's Seeking Headcounts



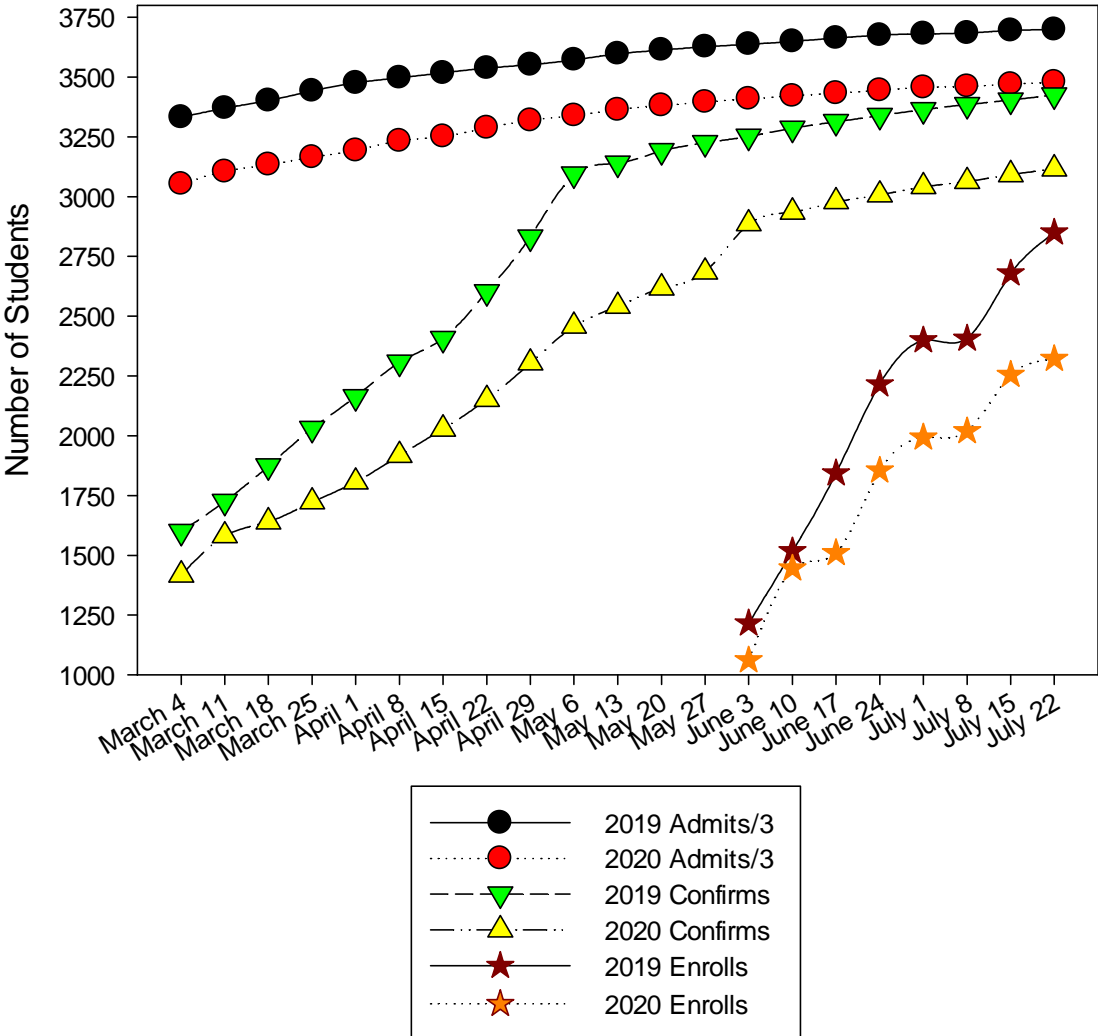
Enrollment Update as of July 22, 2020

Category	2019 Headcounts	2020 Headcounts	Headcount Difference	% Difference
Summer Course Enrollments	6,297	5,823	-474	-7.5%
Fall Course Enrollments	16,843	15,280	-1,563	-9.3%
New Freshman Admits	11,097	10,436	-661	-6.0%
New Freshman Confirmations	3,425	3,116	-309	-9.0%
New Freshman Enrollments	2,850	2,322	-528	-18.5%

Summer and Fall Headcount Registration Trends - 2019 vs. 2020



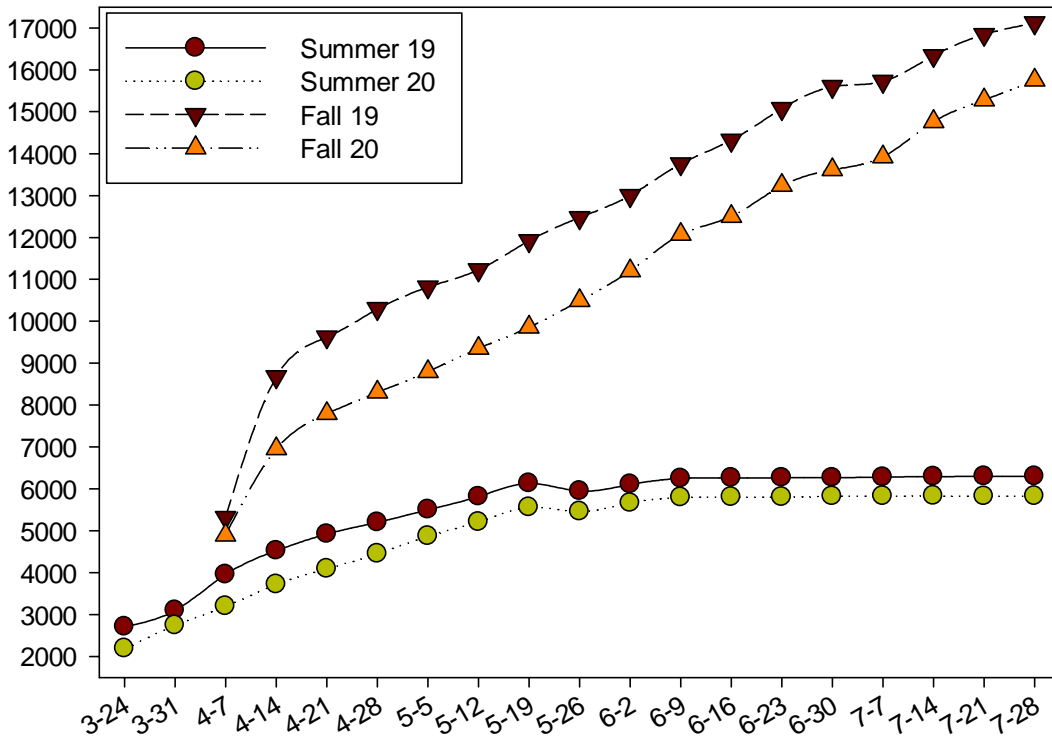
Fall Enrollment Funnel FTFT Bachelor's Seeking Headcounts



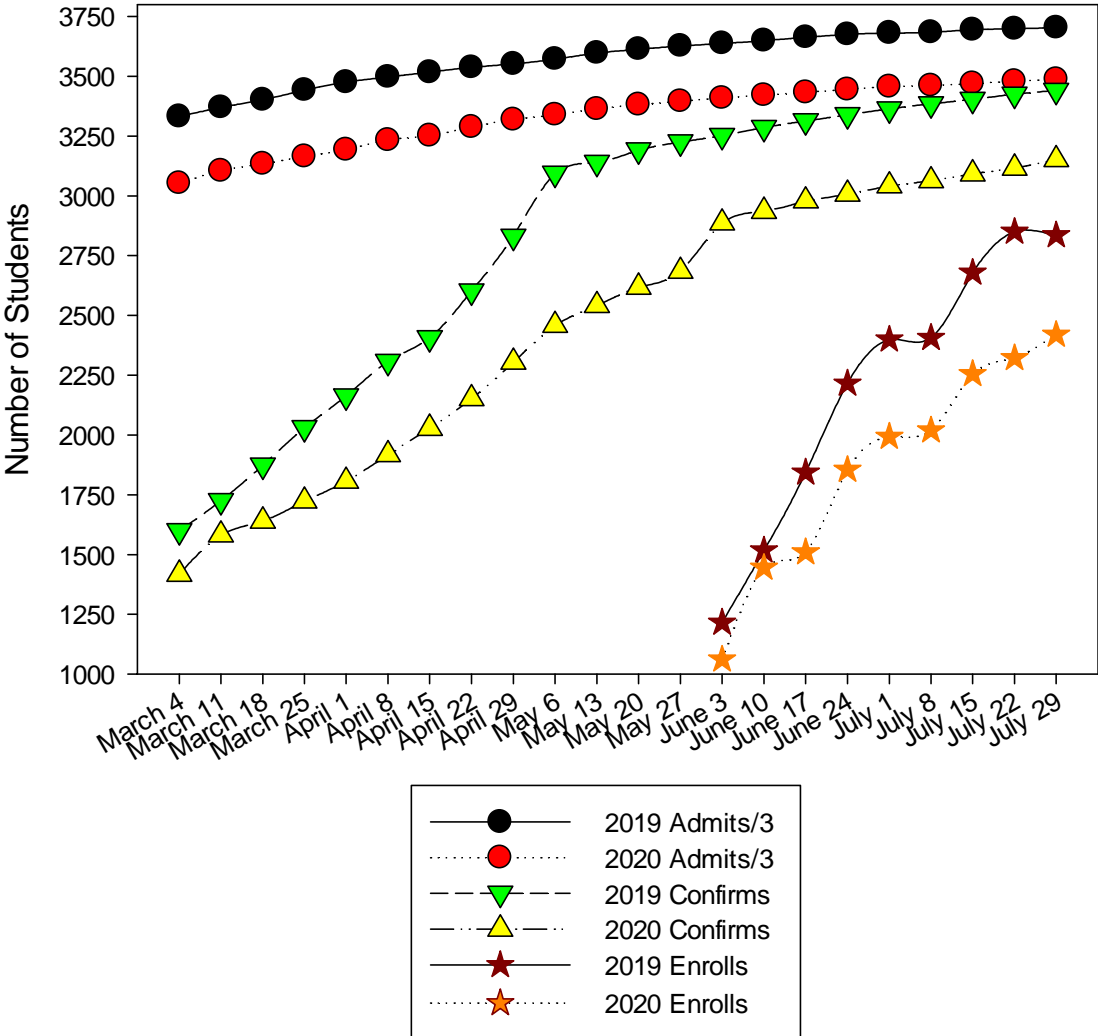
Enrollment Update as of July 29, 2020

Category	2019 Headcounts	2020 Headcounts	Headcount Difference	% Difference
Summer Course Enrollments	6,300	5,826	-474	-7.5%
Fall Course Enrollments	17,124	15,752	-1,372	-8.0%
New Freshman Admits	11,112	10,464	-648	-5.8%
New Freshman Confirmations	3,441	3,151	-290	-8.4%
New Freshman Enrollments	2,836	2,420	-416	-14.7%

Summer and Fall Headcount Registration Trends - 2019 vs. 2020



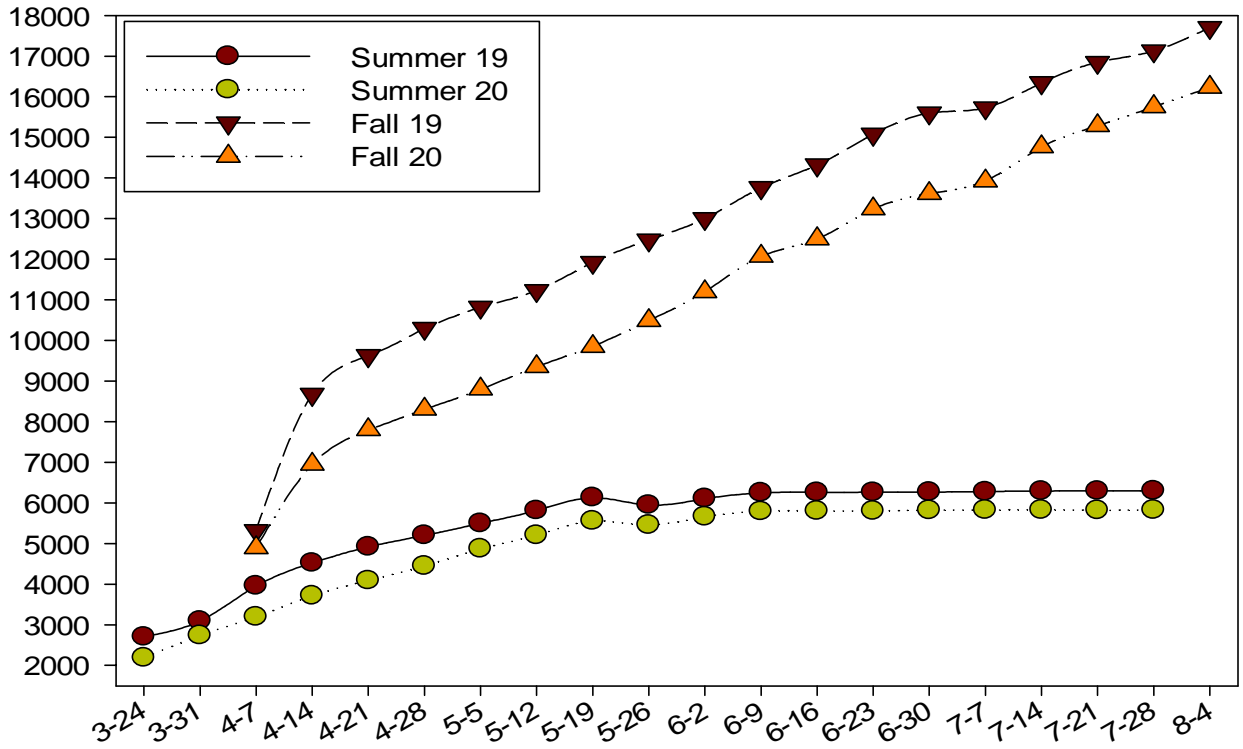
Fall Enrollment Funnel FTFT Bachelor's Seeking Headcounts



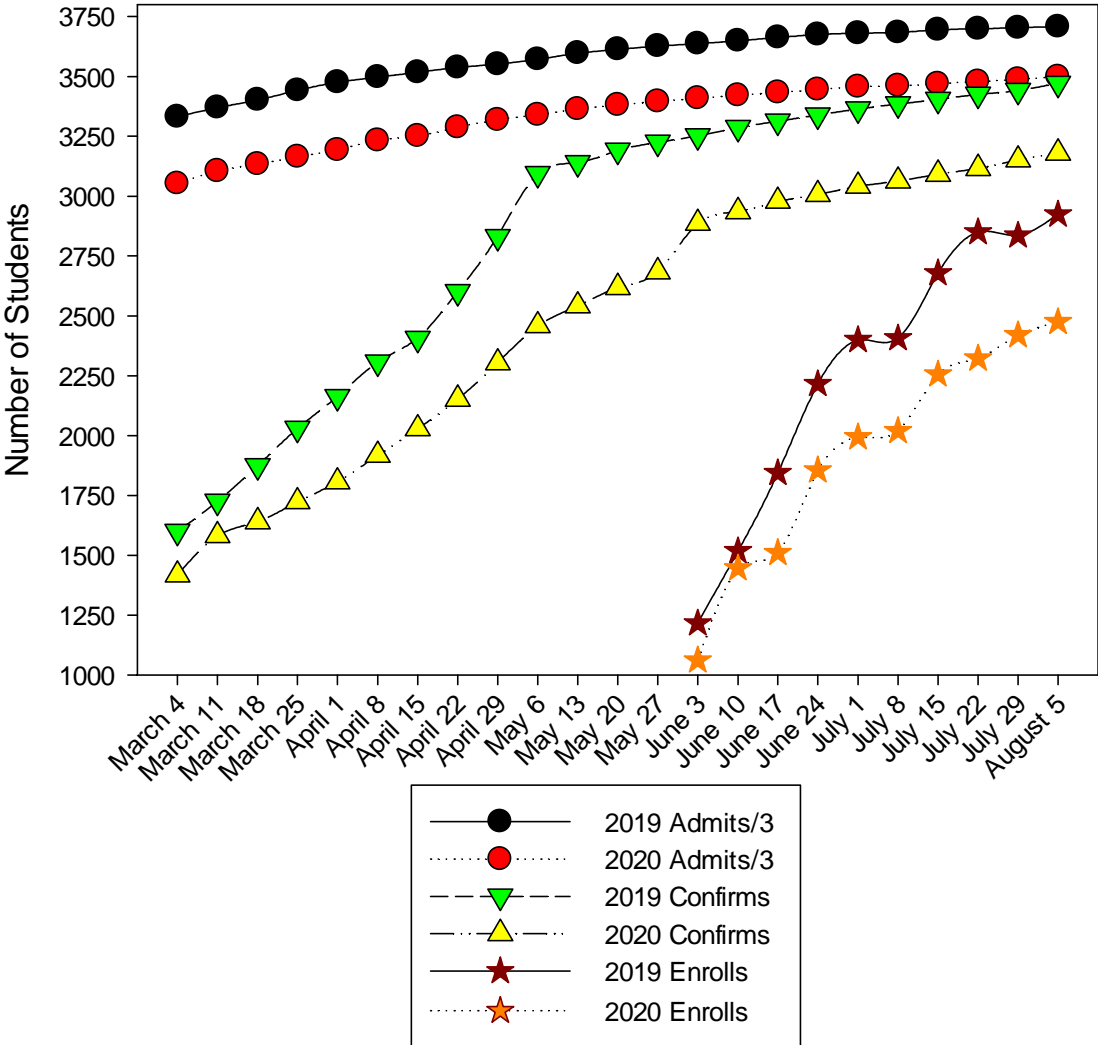
Enrollment Update as of August 5, 2020

Category	2019 Headcounts	2020 Headcounts	Headcount Difference	% Difference
Summer Course Enrollments	6,300	5,826	-474	-7.5%
Fall Course Enrollments	17,699	16,229	-1,470	-8.3%
New Freshman Admits	11,124	10,497	-627	-5.6%
New Freshman Confirmations	3,472	3,180	-292	-8.4%
New Freshman Enrollments	2,924	2,475	-449	-15.4%

Summer and Fall Headcount Registration Trends - 2019 vs. 2020



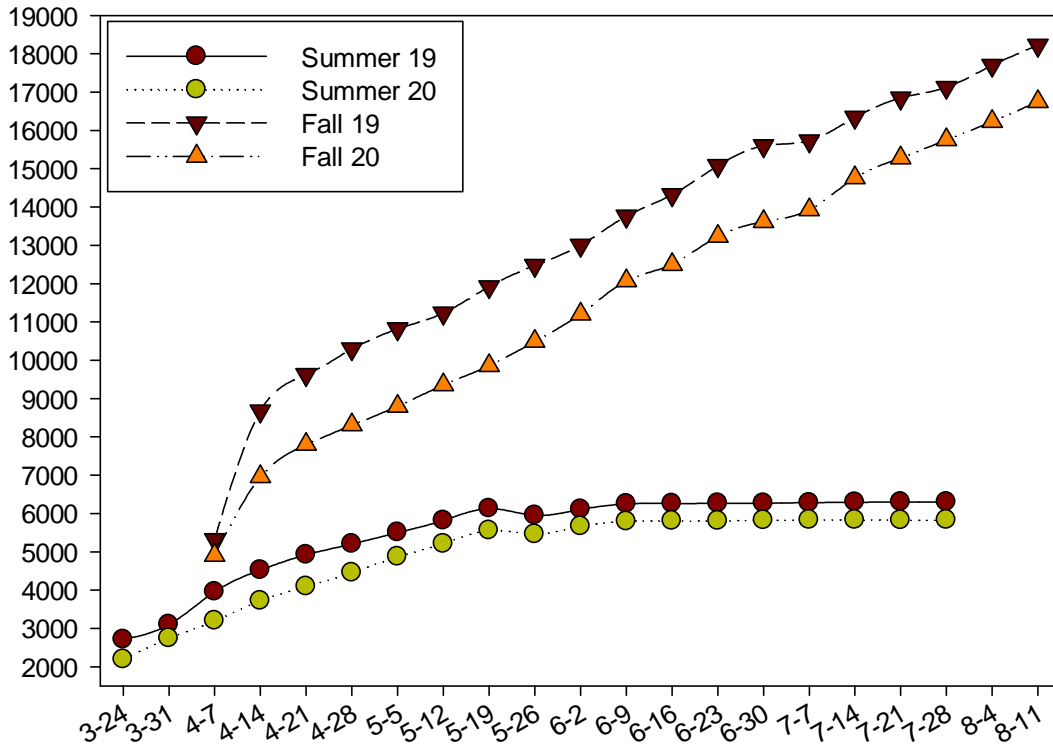
Fall Enrollment Funnel FTFT Bachelor's Seeking Headcounts



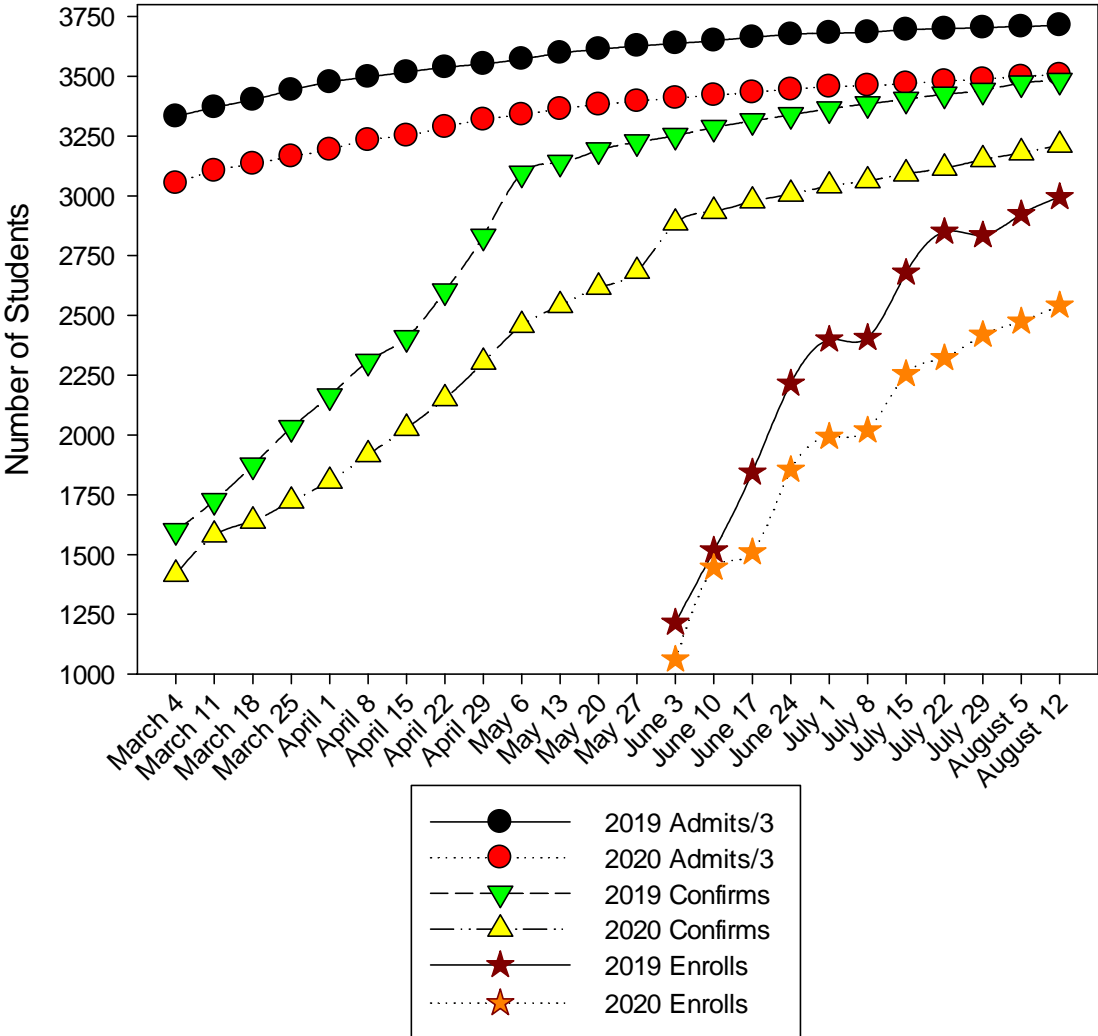
Enrollment Update as of August 12, 2020

Category	2019 Headcounts	2020 Headcounts	Headcount Difference	% Difference
Summer Course Enrollments	6,300	5,826	-474	-7.5%
Fall Course Enrollments	18,221	16,747	-1,474	-8.1%
New Freshman Admits	11,138	10,519	-619	-5.6%
New Freshman Confirmations	3,483	3,212	-271	-7.8%
New Freshman Enrollments	2,996	2,542	-454	-15.2%

Summer and Fall Headcount Registration Trends - 2019 vs. 2020



Fall Enrollment Funnel FTFT Bachelor's Seeking Headcounts

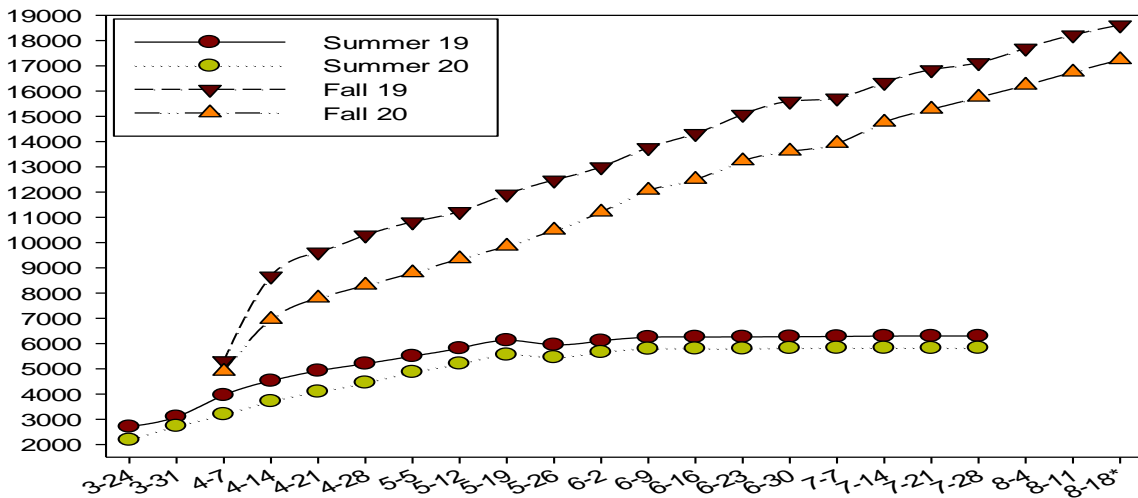


Enrollment Update as of August 19, 2020*

Category	2019 Headcounts	2020 Headcounts	Headcount Difference	% Difference
Summer Course Enrollments	6,300	5,826	-474	-7.5%
Fall Course Enrollments	18,618	17,240	-1,378	-7.4%
New Freshman Admits	11,149	10,546	-603	-5.4%
New Freshman Confirmations	3,499	3,236	-263	-7.5%
New Freshman Enrollments	2,957	2,545	-412	-13.9%

*Tuesday before classes begin: 8-18-20 vs. 8-20-19

Summer and Fall Headcount Registration Trends - 2019 vs. 2020



Fall Enrollment Funnel FTFT Bachelor's Seeking Headcounts

